



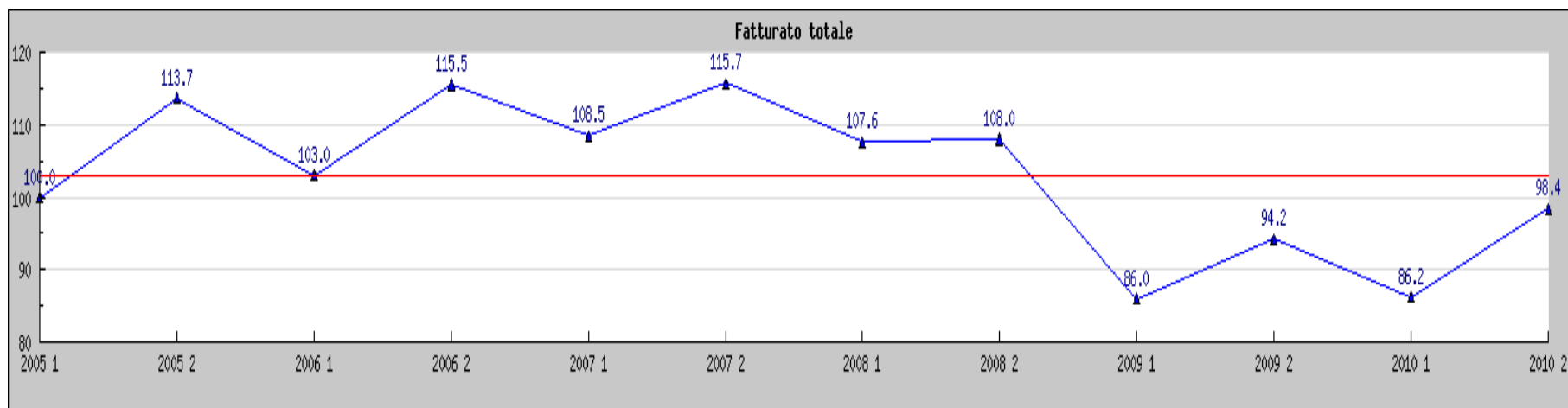
*TrendER*

Aggiornamento al II semestre 2010

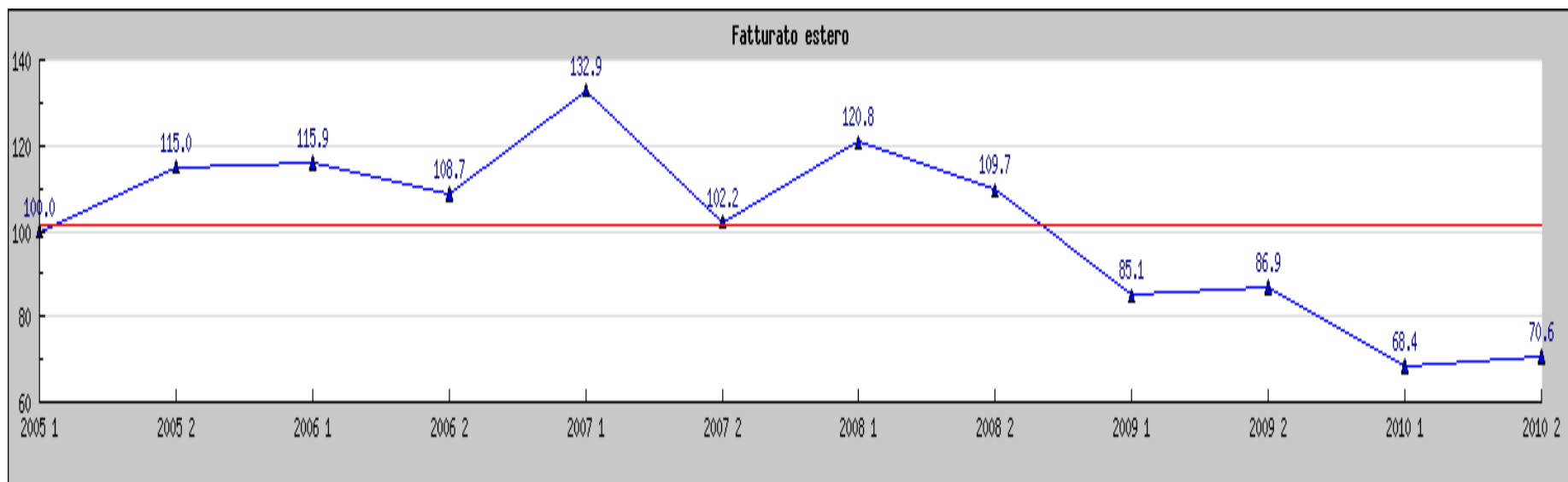
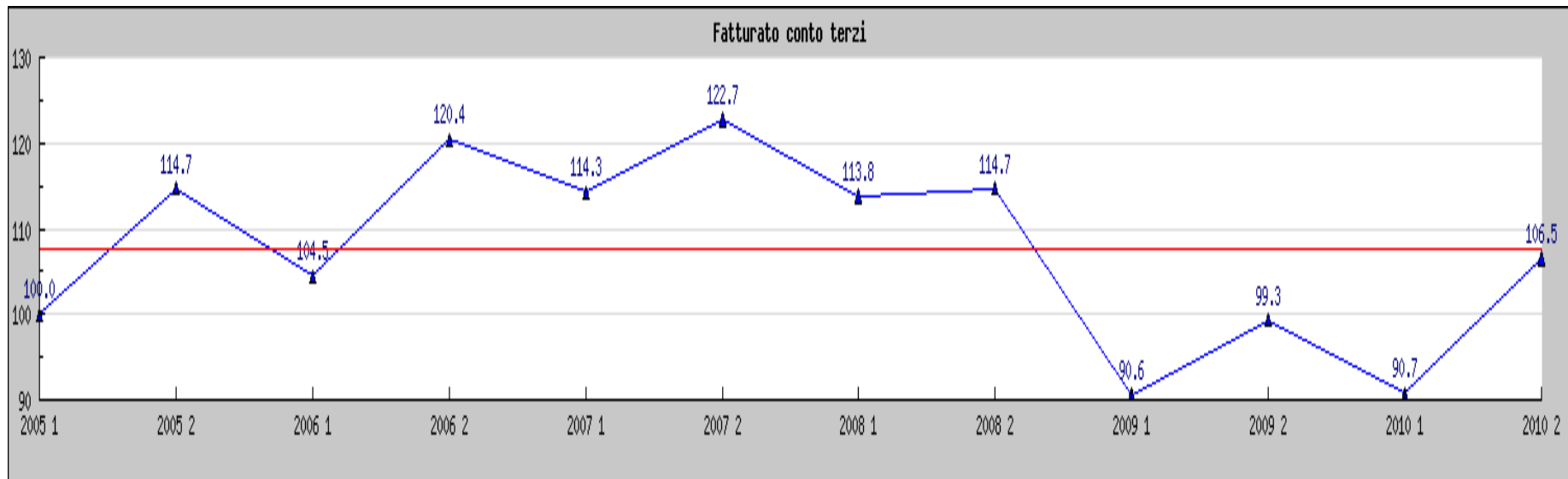
Bologna, 20 aprile 2011

# Indici semestrali a base fissa (I sem.2005=100)

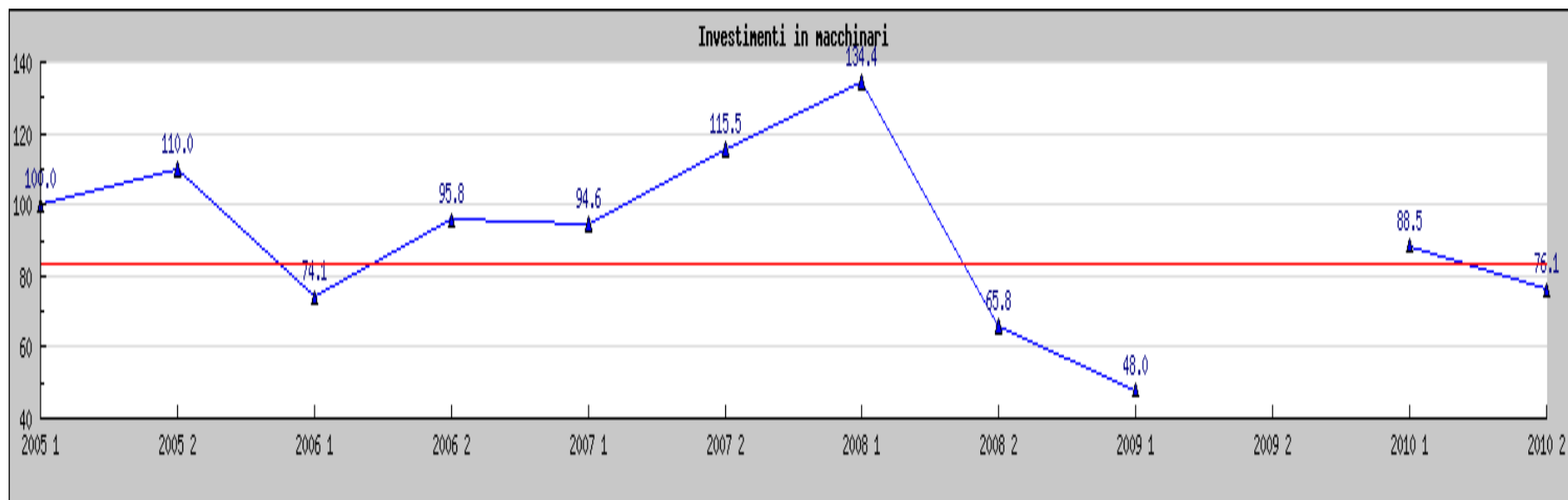
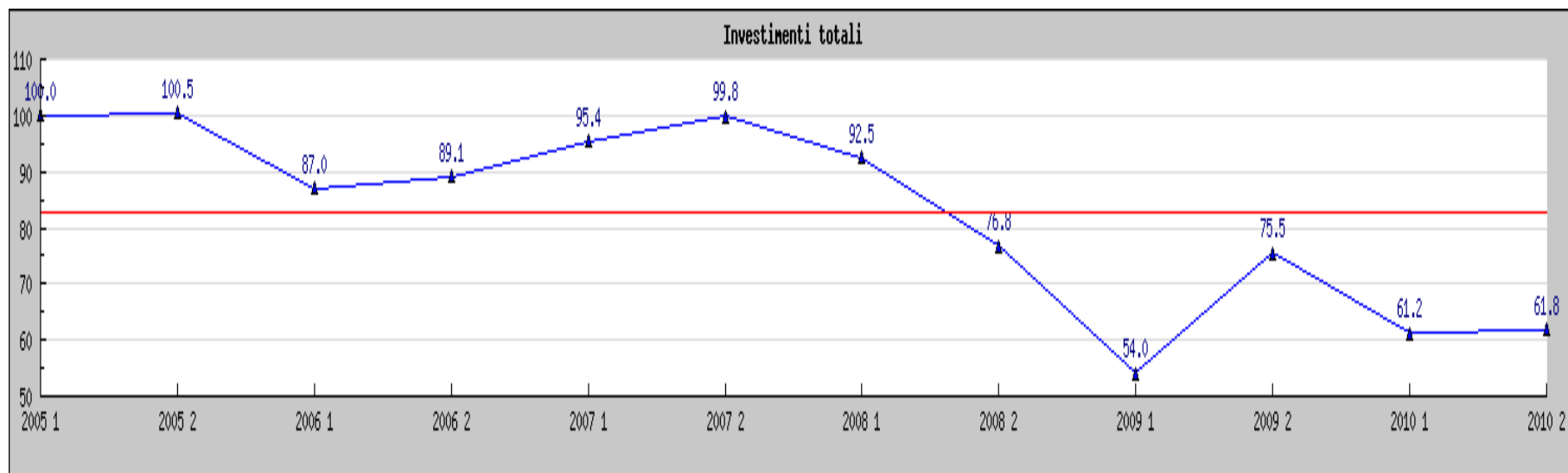
## fatturato totale



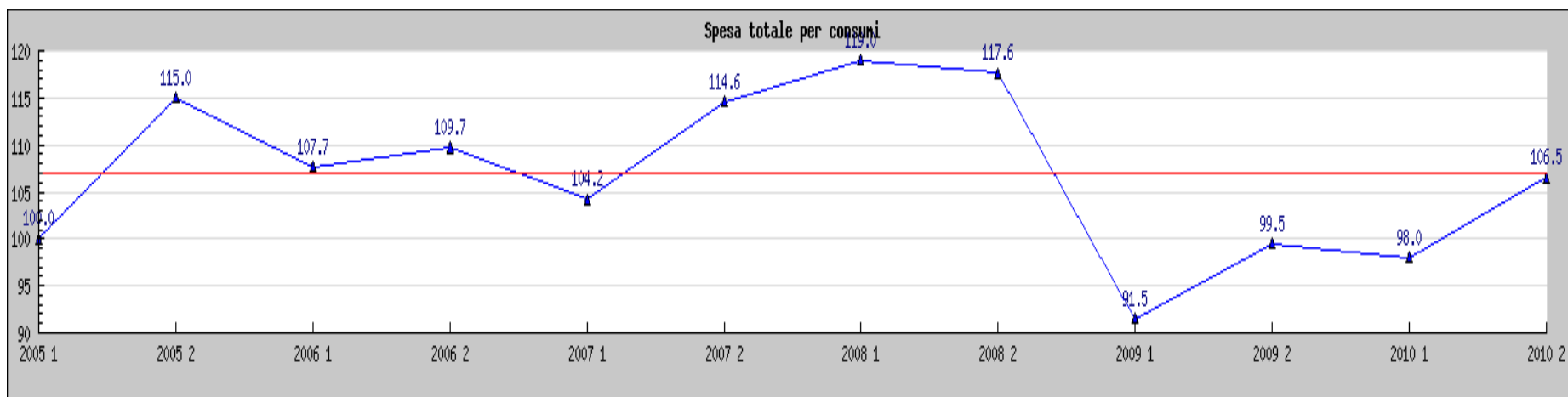
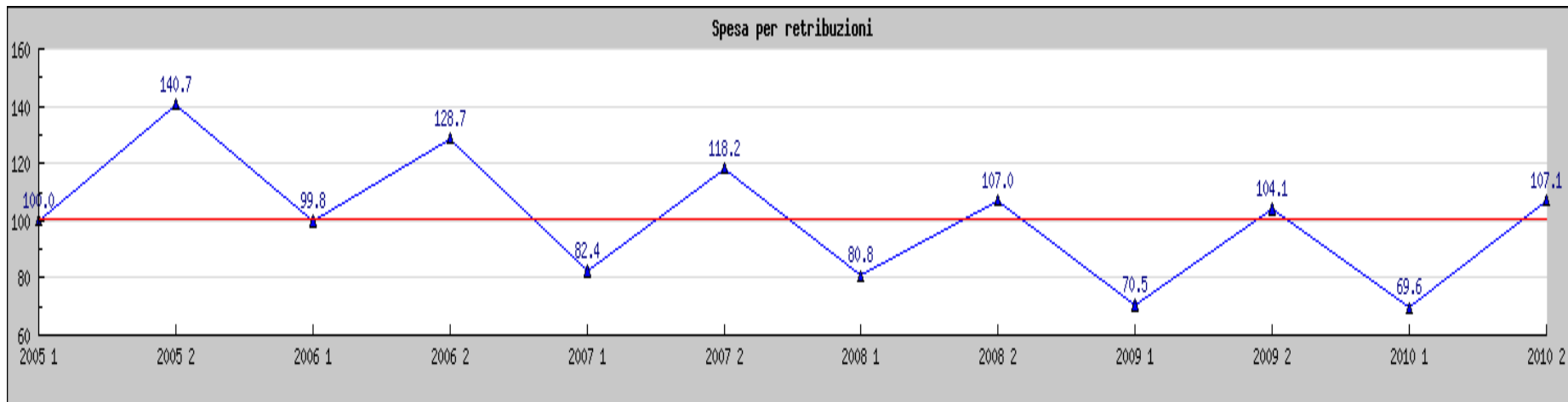
## Componenti del fatturato



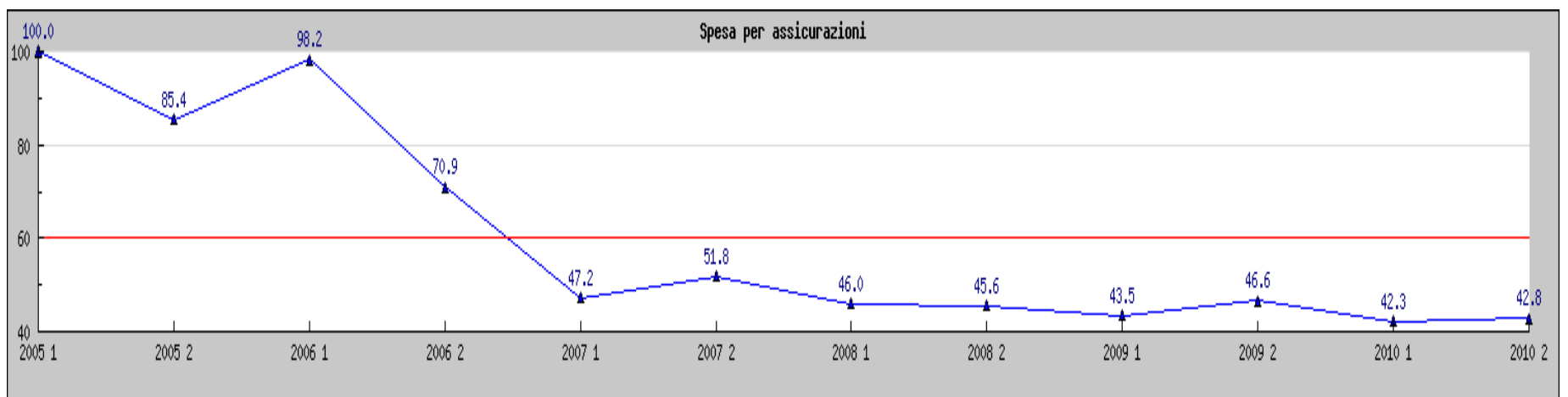
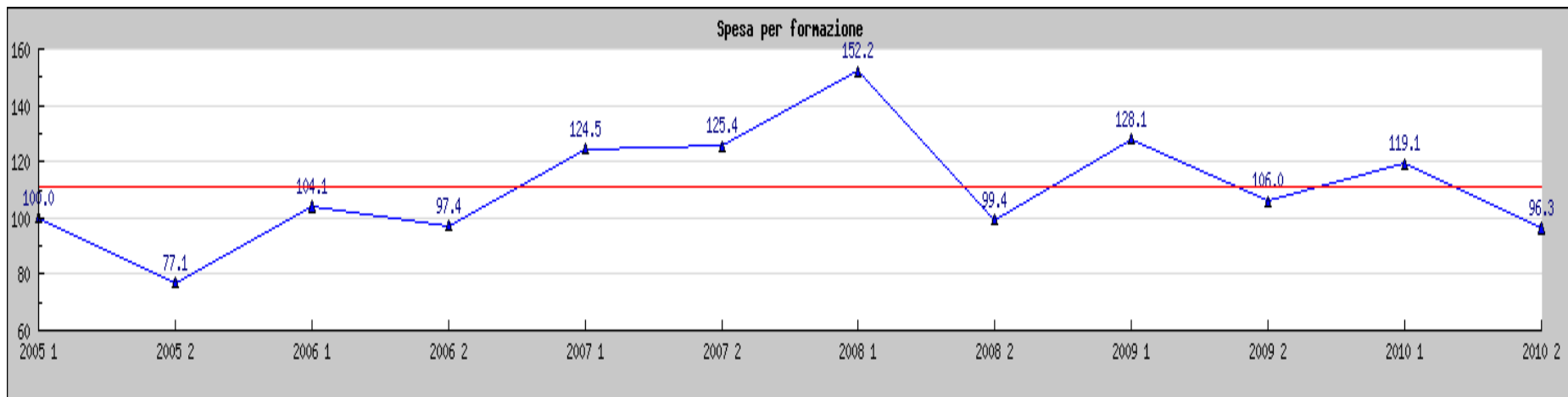
## investimenti



## I costi: spese per retribuzioni e per consumi

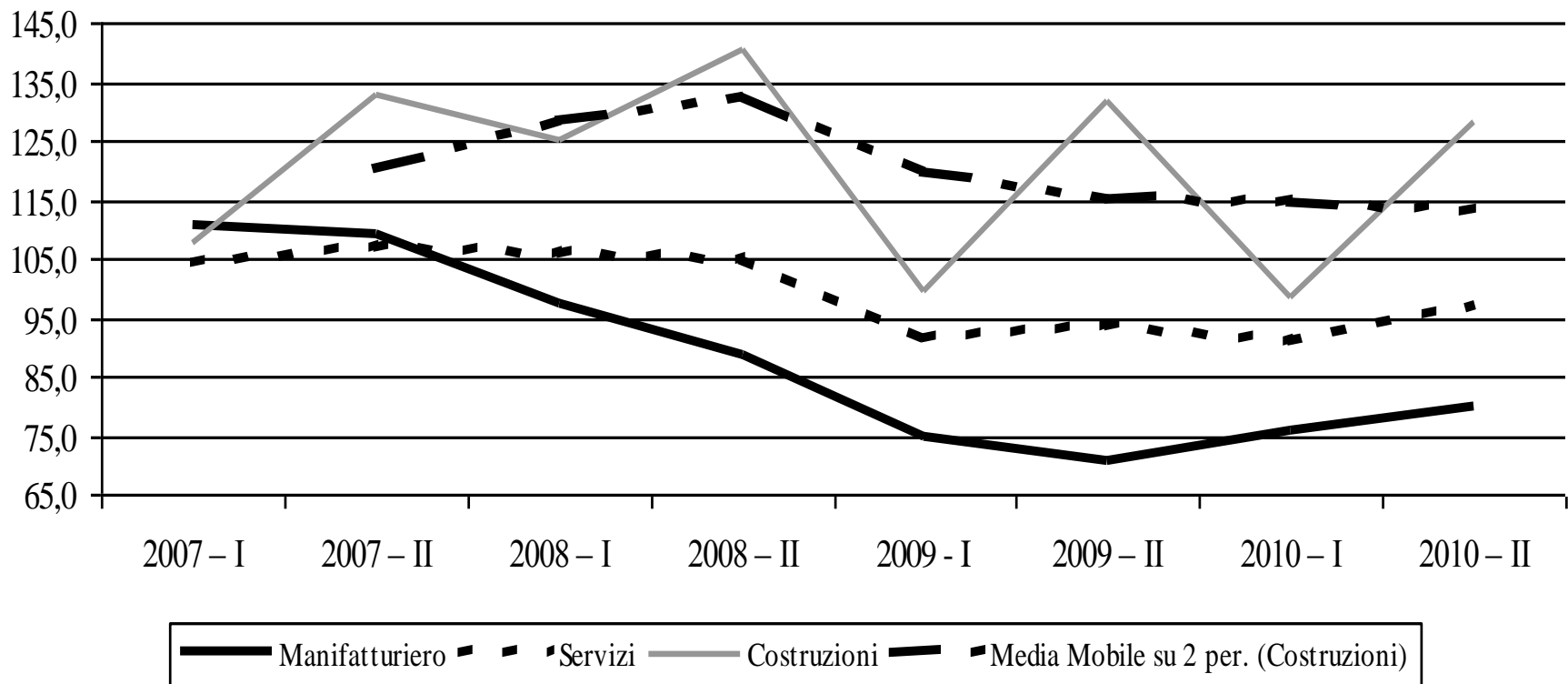


## I costi: spese per formazione e assicurazione



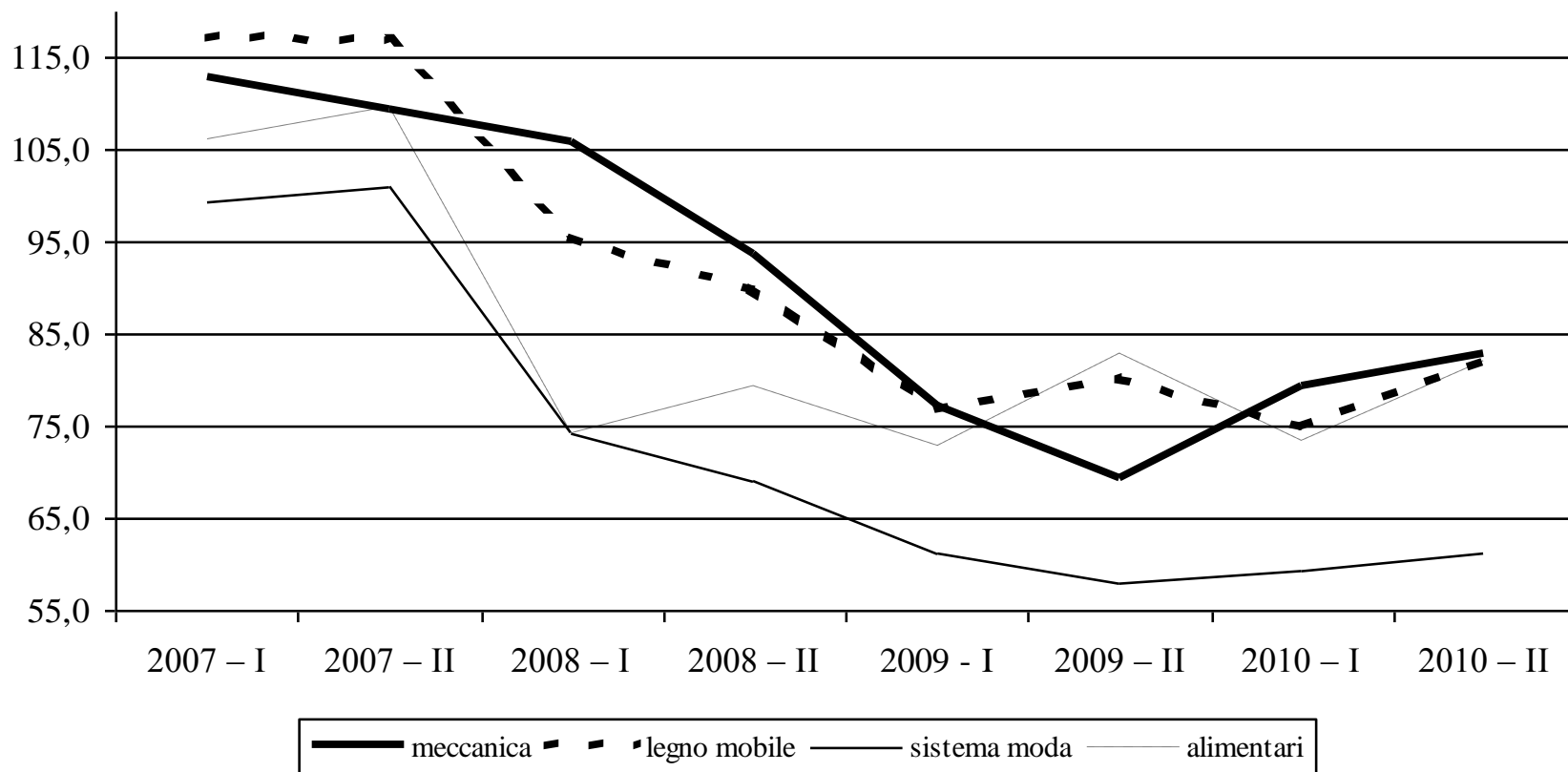
## Il fatturato per macrosettori

Fatturato - numeri indice dei livelli (I sem. 2005=100)



## Il fatturato per i settori manifatturieri

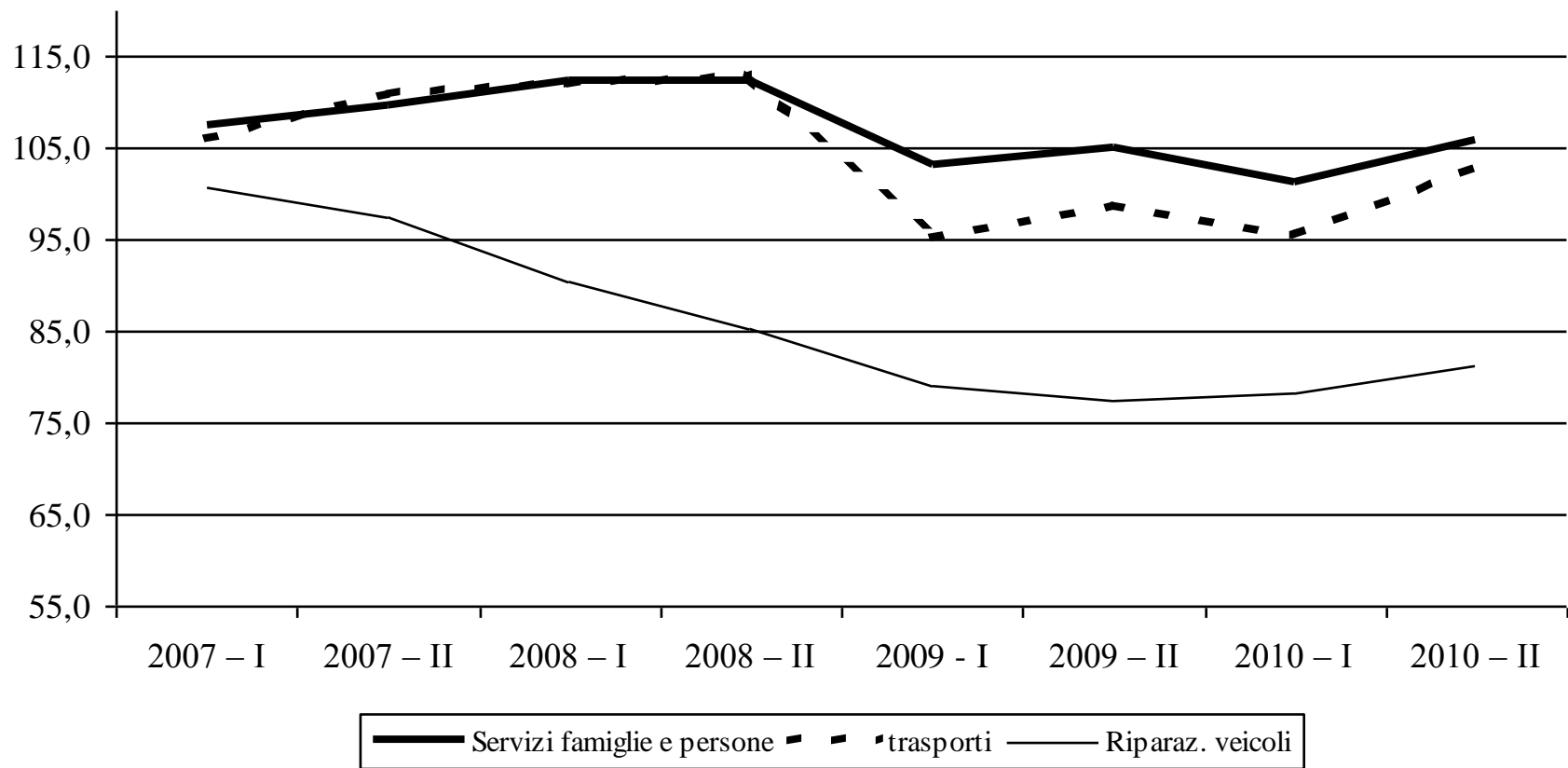
Fatturato attività manifatturiere - numeri indice dei livelli (I sem. 2005=100)



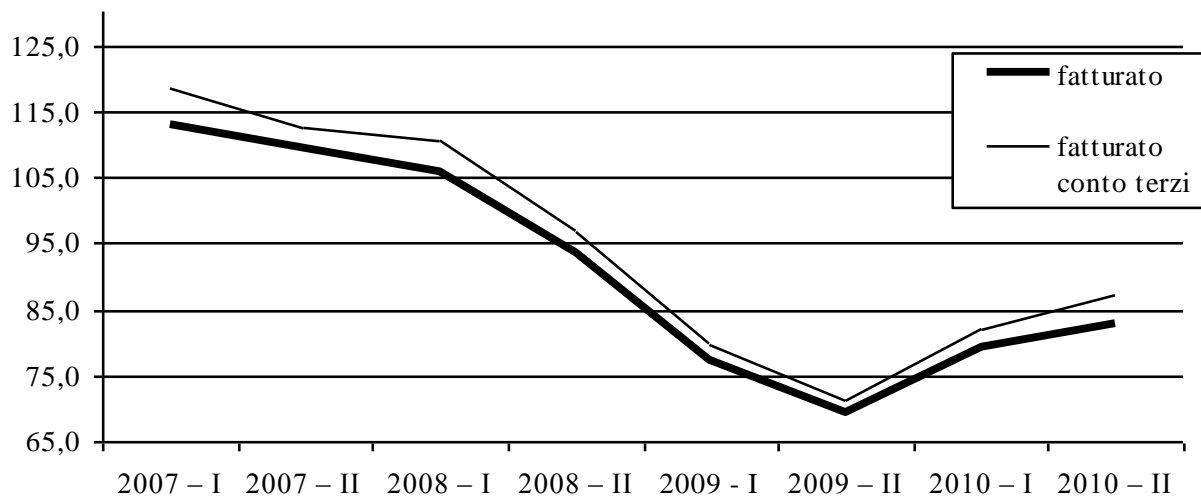


## Il fatturato per i settori del terziario

Fatturato attività di servizio - numeri indice dei livelli (I sem. 2005=100)

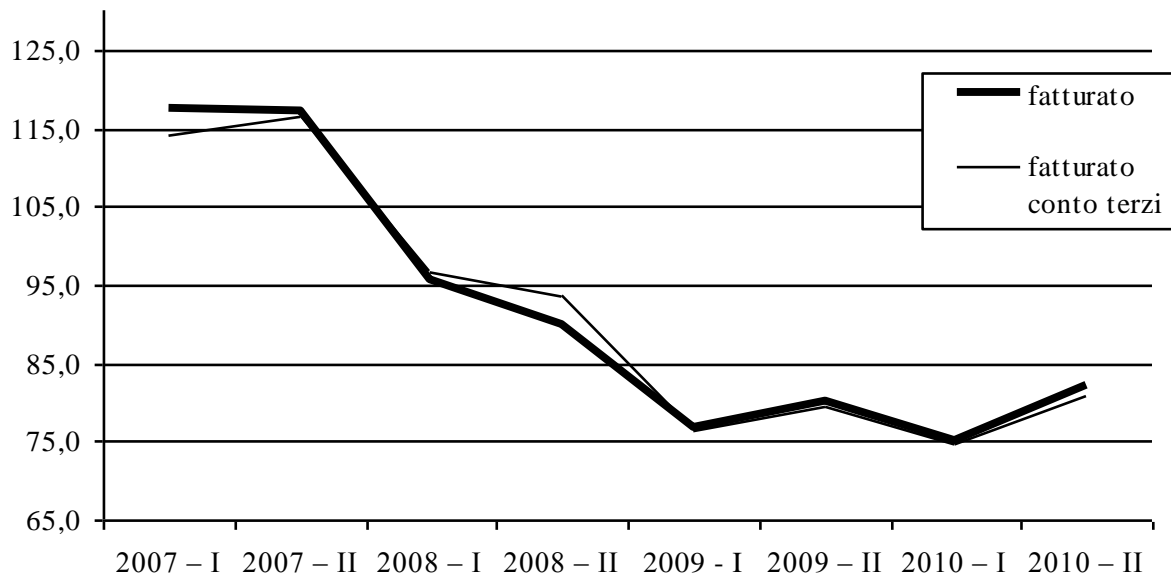


**Fatturato totale e c/terzi per la MECCANICA - numeri indice dei livelli (I sem. 2005=100)**



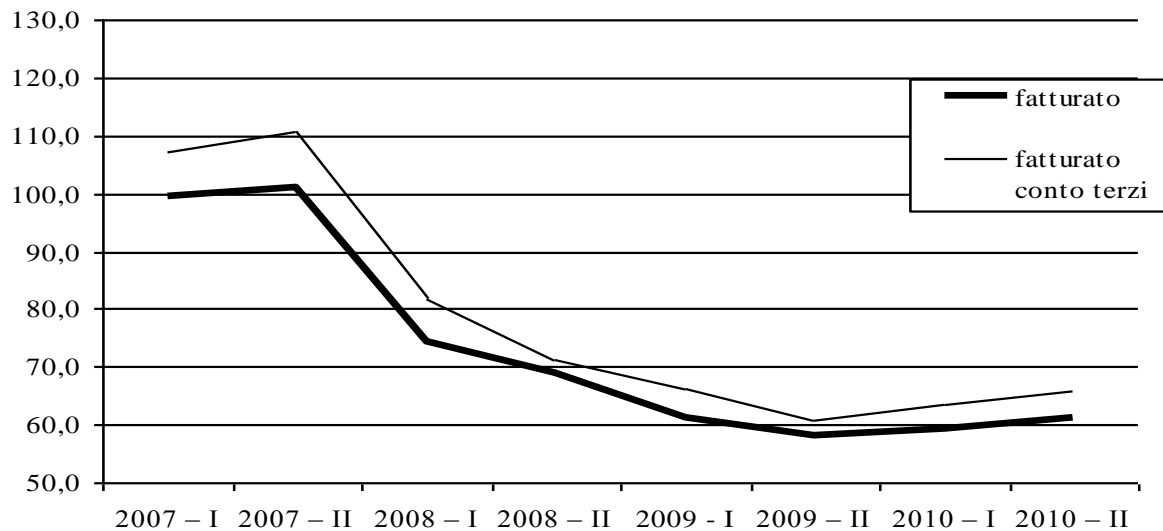
**Il fatturato  
 per conto  
 terzi 1**

**Fatturato totale e c/terzi per il LEGNO-MOBILE - numeri indice dei livelli (I sem. 2005=100)**

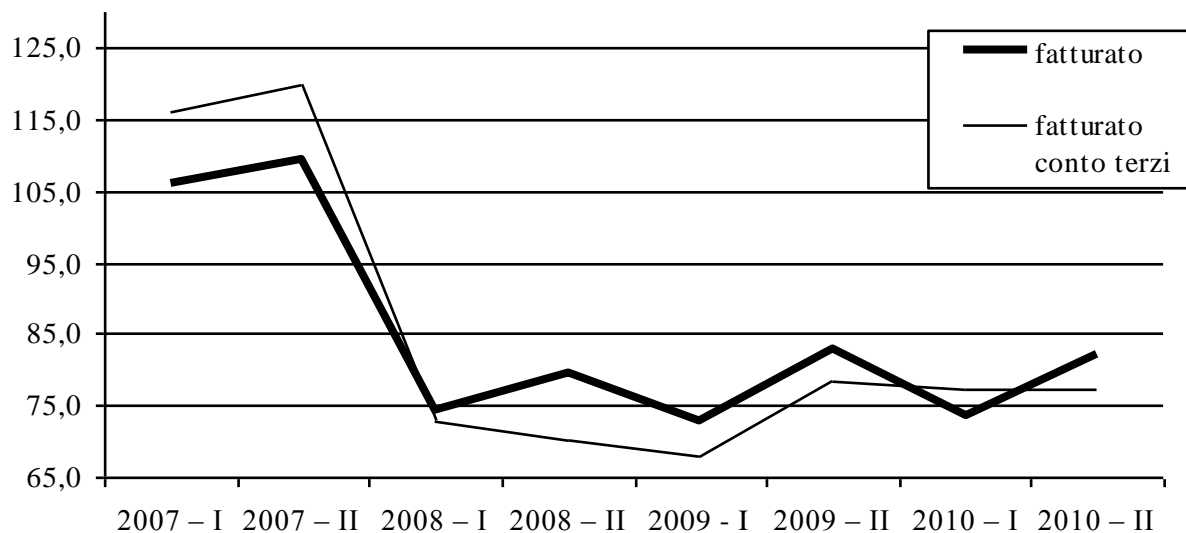


## Il fatturato per conto terzi 2

**Fatturato totale e c/terzi per il SISTEMA MODA - numeri indice dei livelli (I sem. 2005=100)**

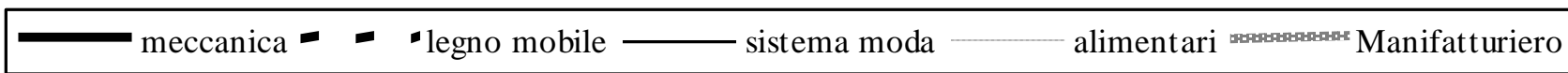
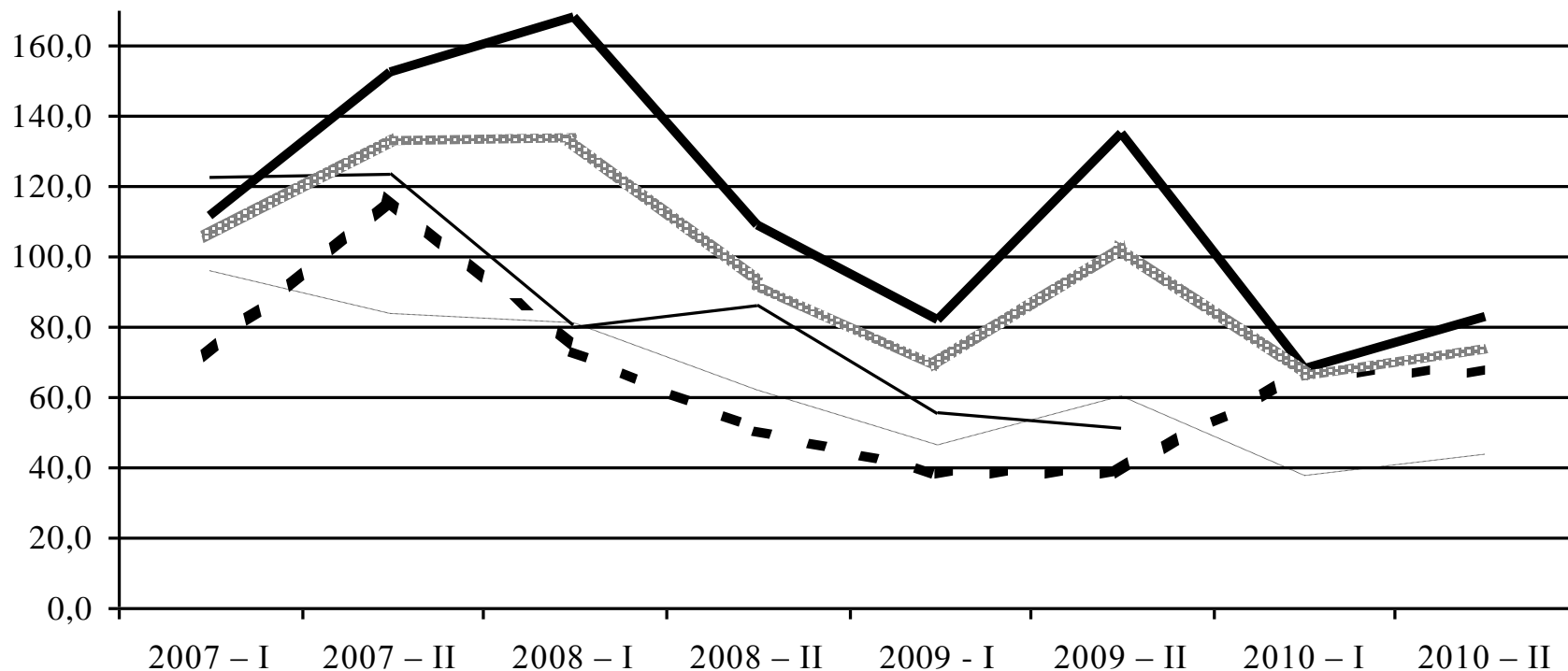


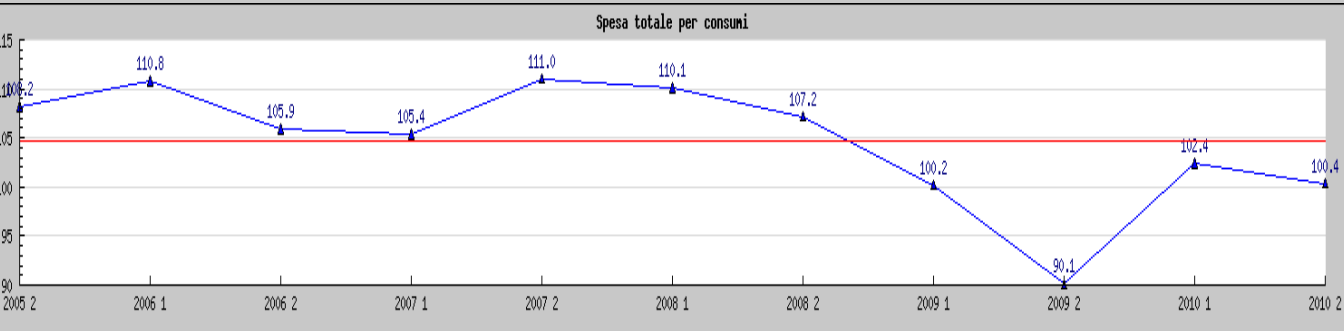
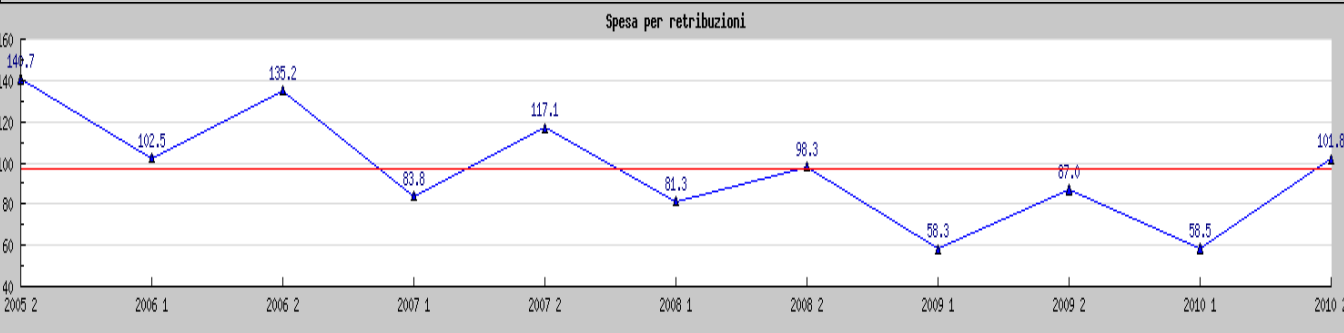
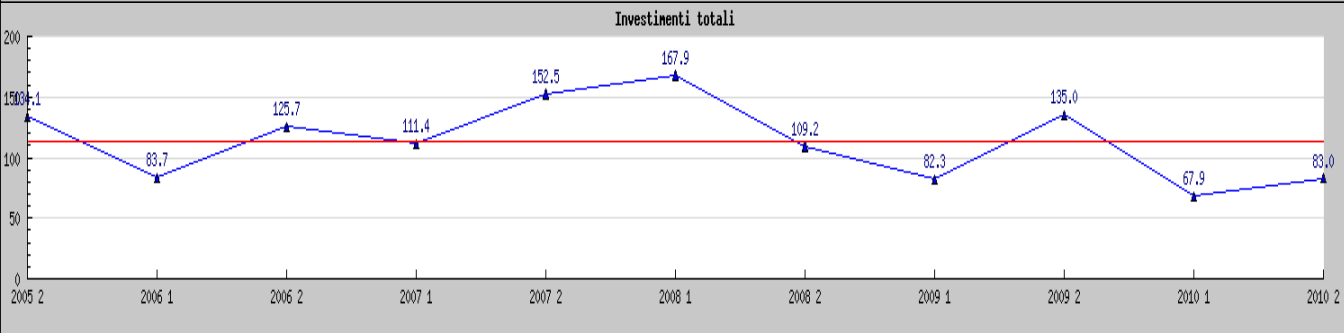
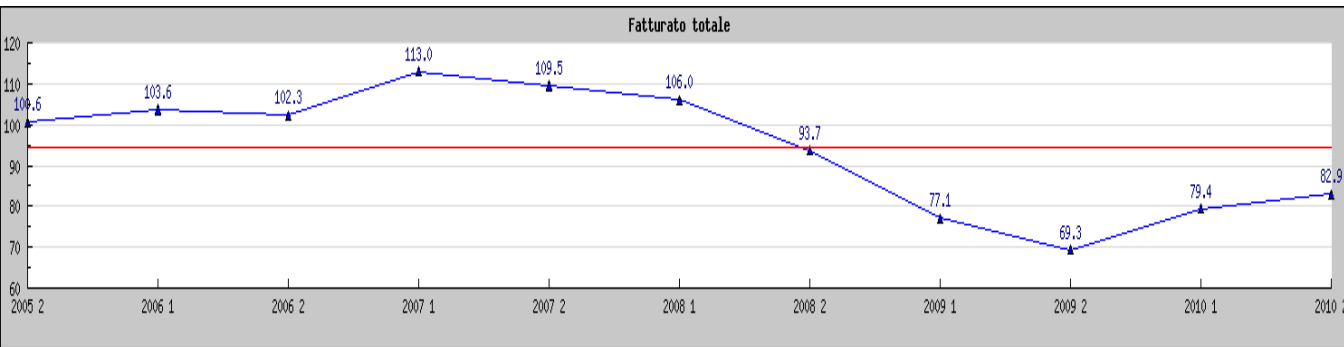
**Fatturato totale e c/terzi per le trasformazioni ALIMENTARI - numeri indice dei livelli (I sem. 2005=100)**

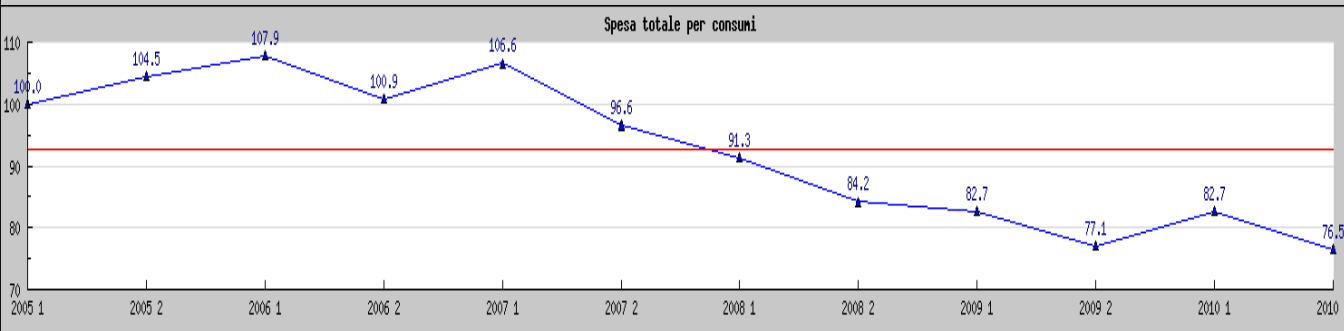
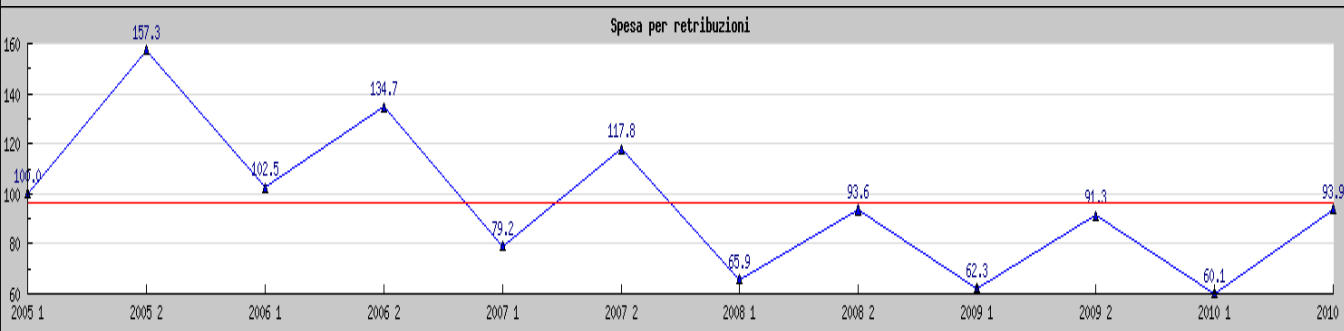
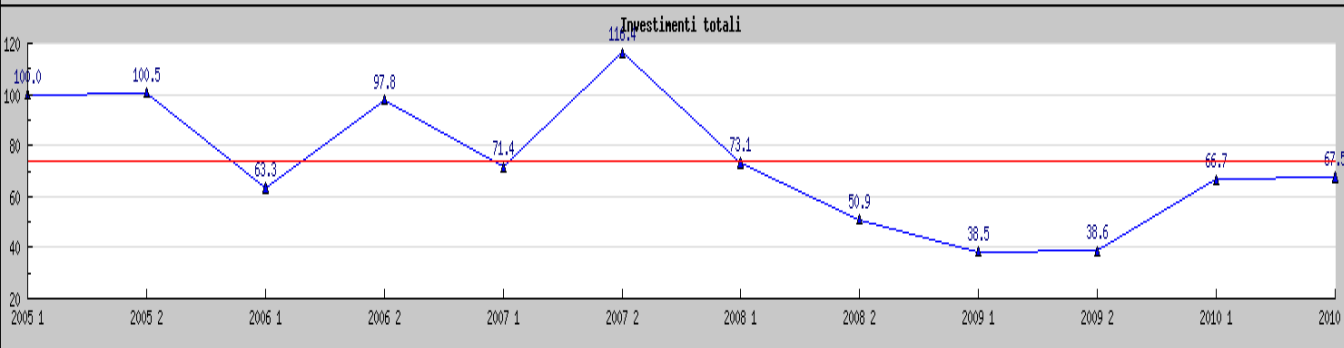
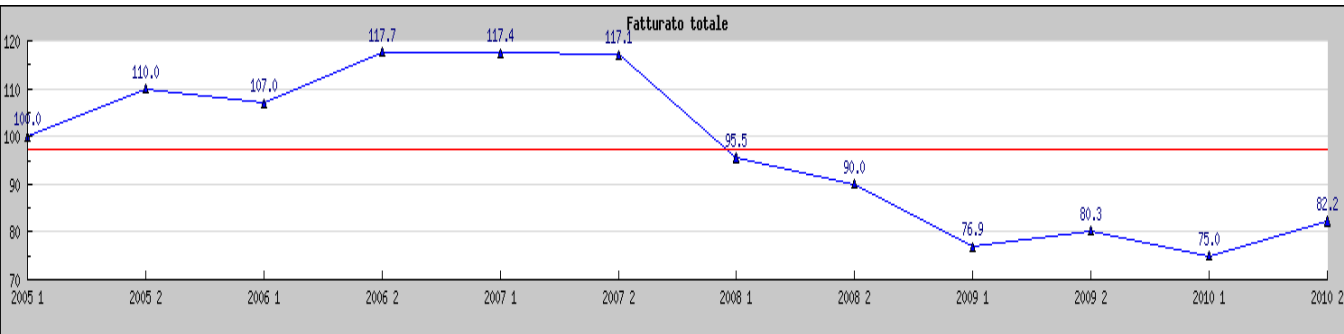


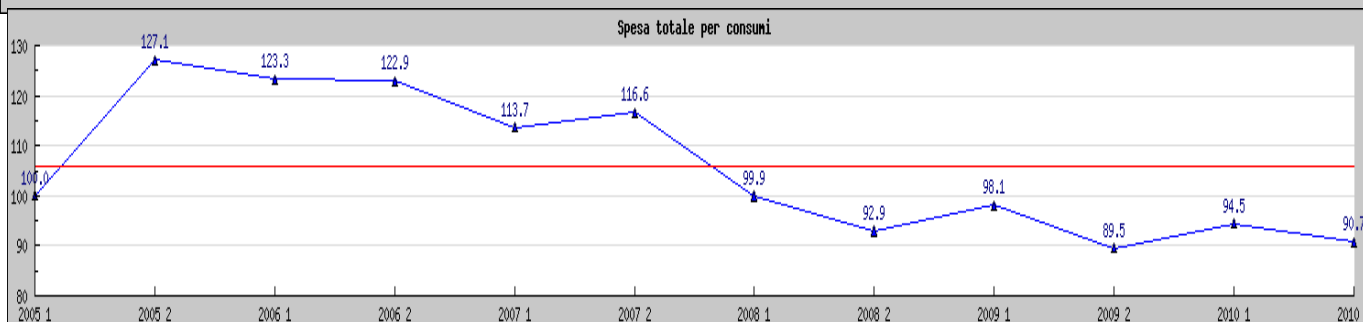
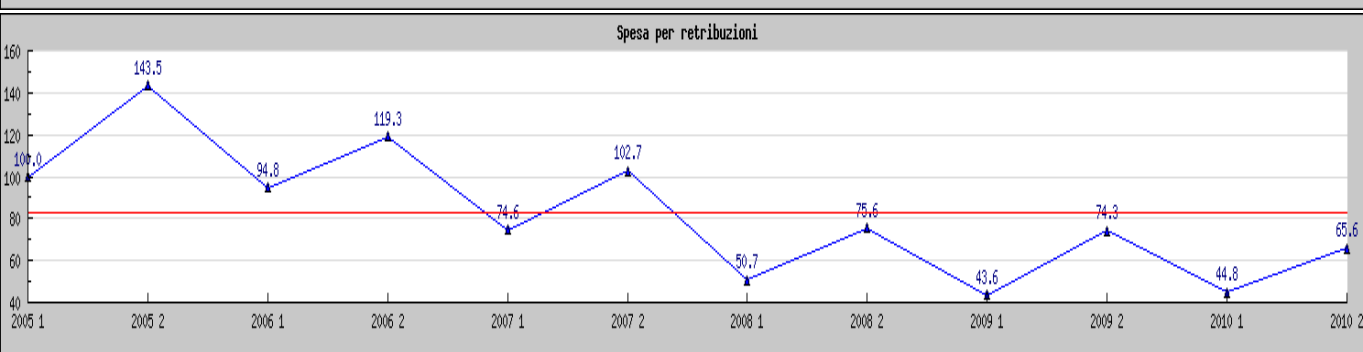
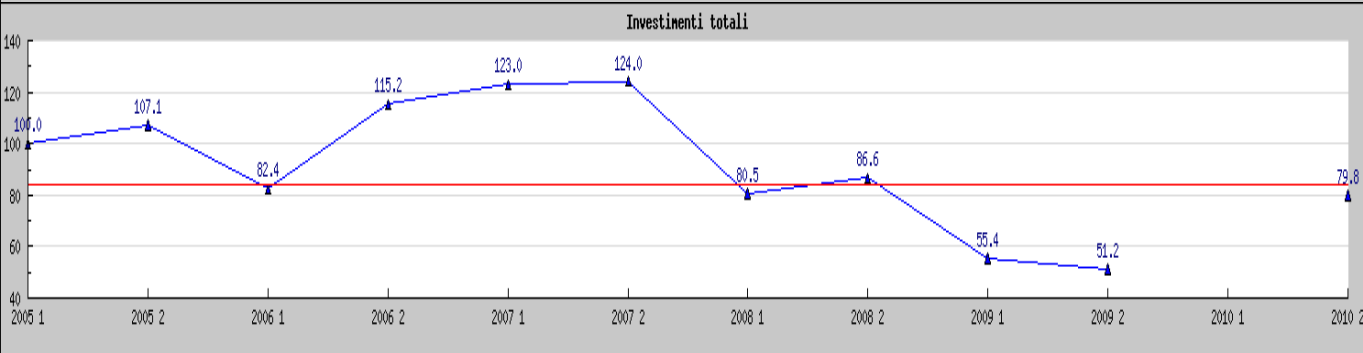
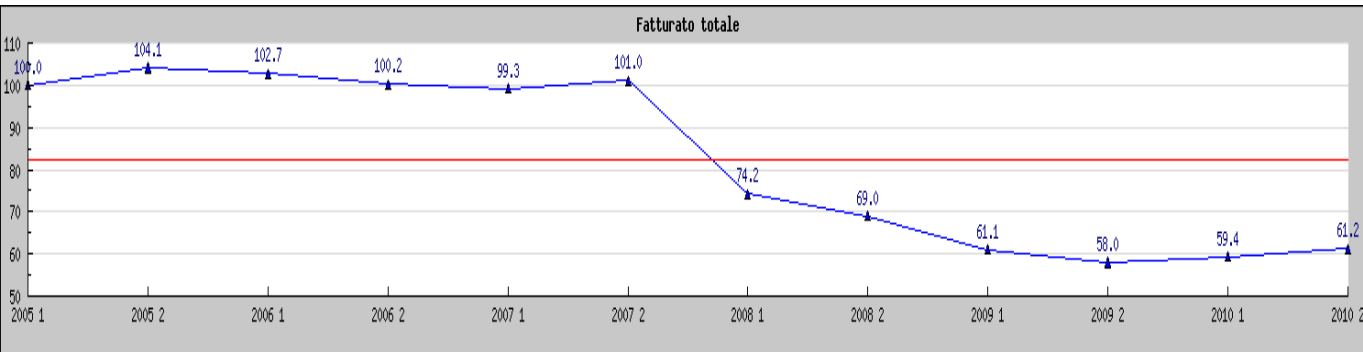
## Gli investimenti nel manifatturiero

INVESTIMENTI attività manifatturiere - numeri indice dei livelli  
 (I sem. 2005=100)



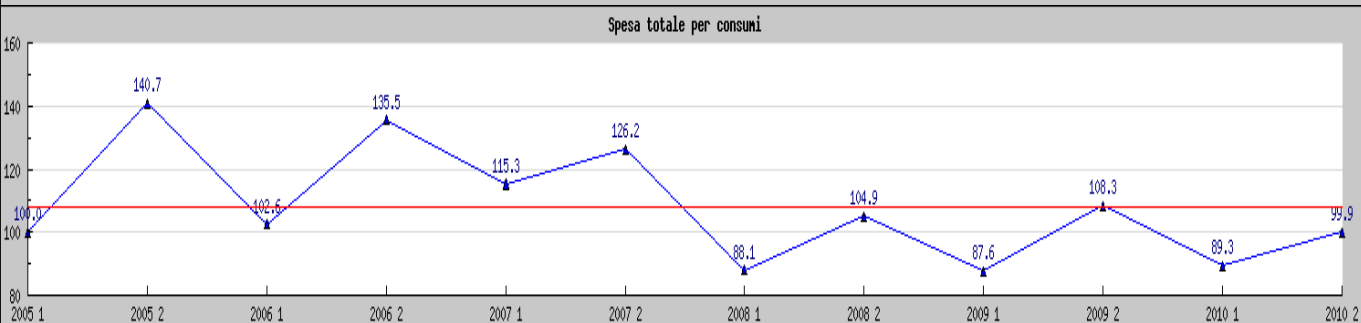
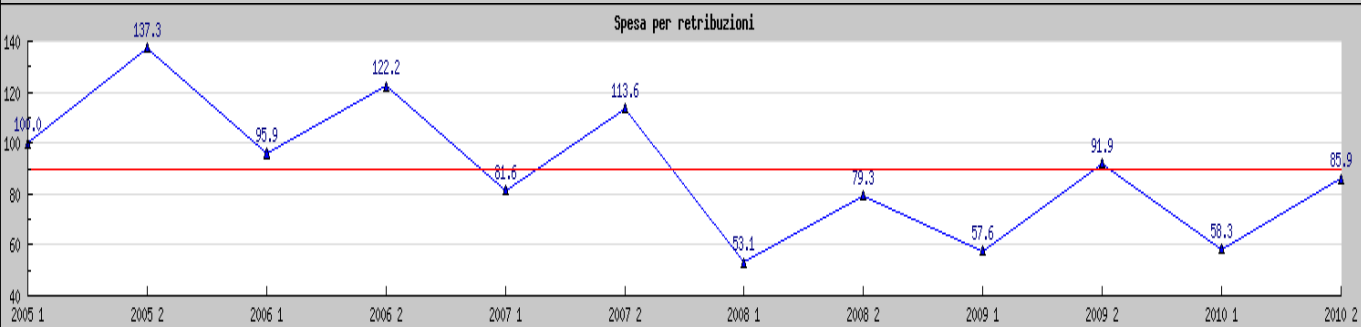
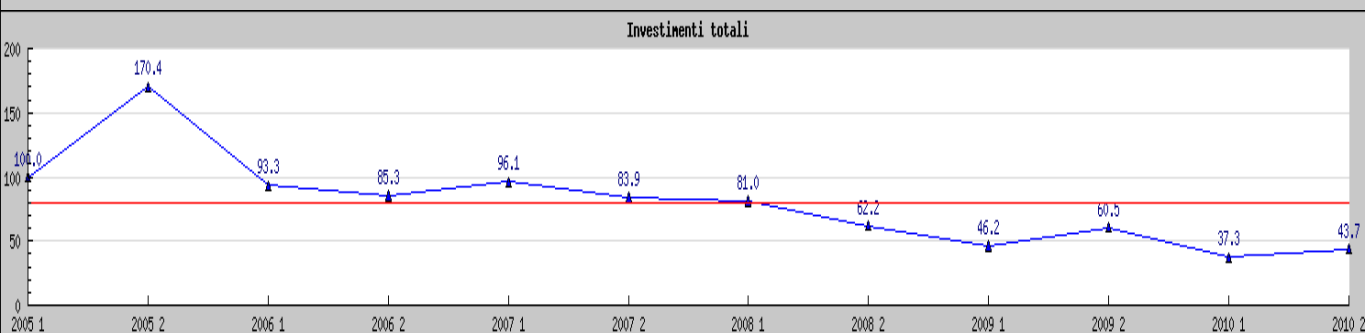
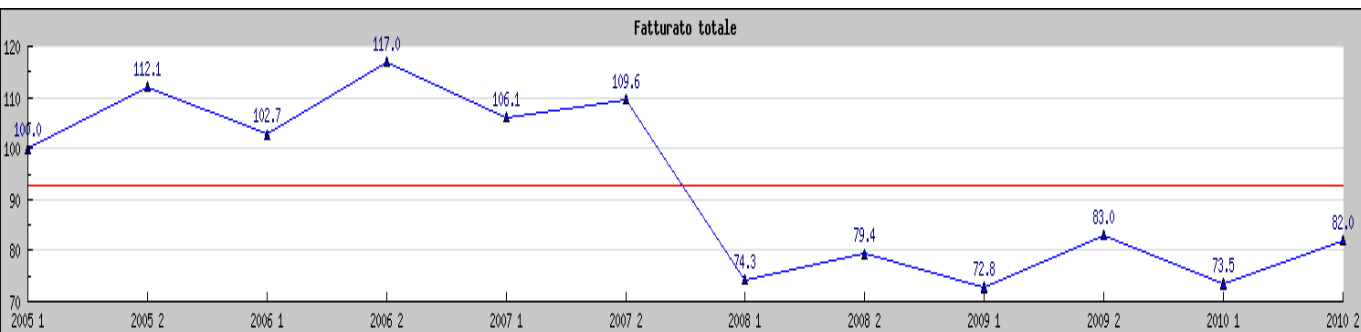






# ALIMENTARI

Indici dei livelli

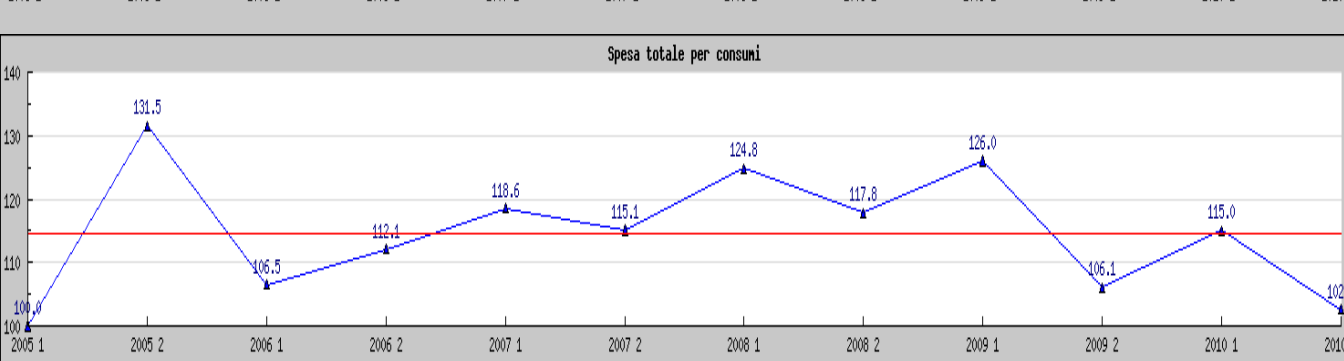
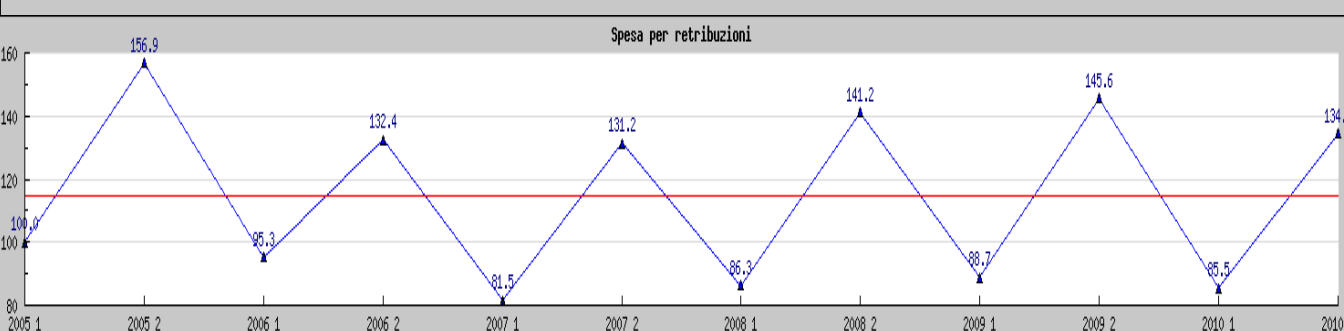
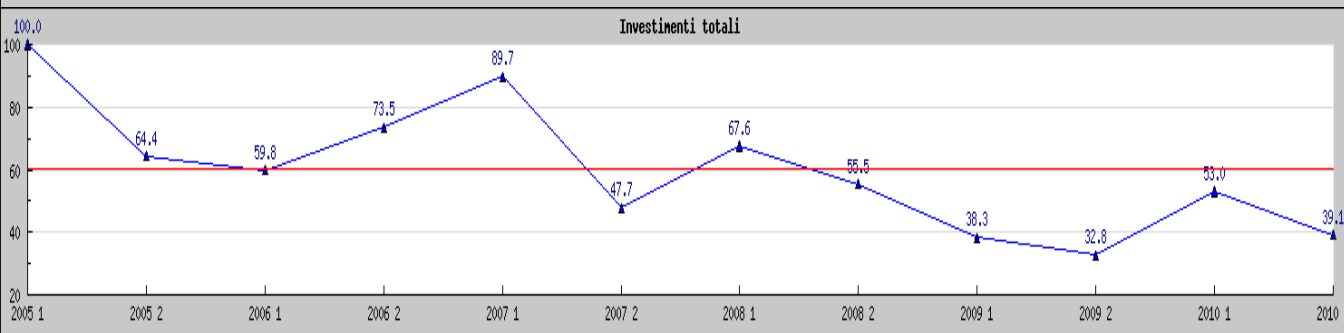
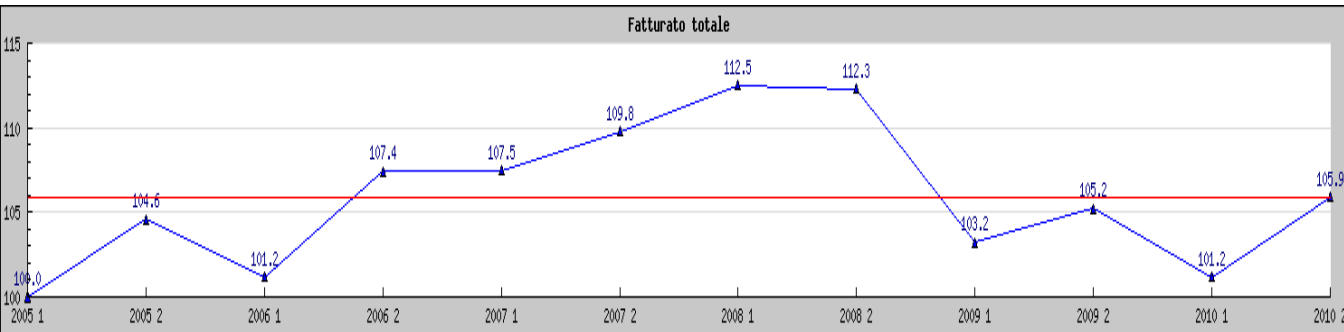


**TRENDER**  
 OSSERVATORIO CONGIUNTURALE  
 SULLA PICCOLA E MEDIA IMPRESA IN EMILIA ROMAGNA



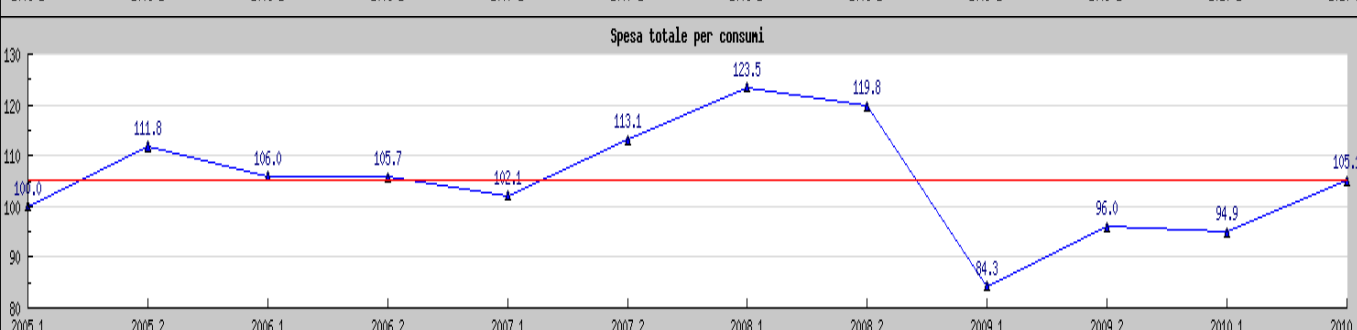
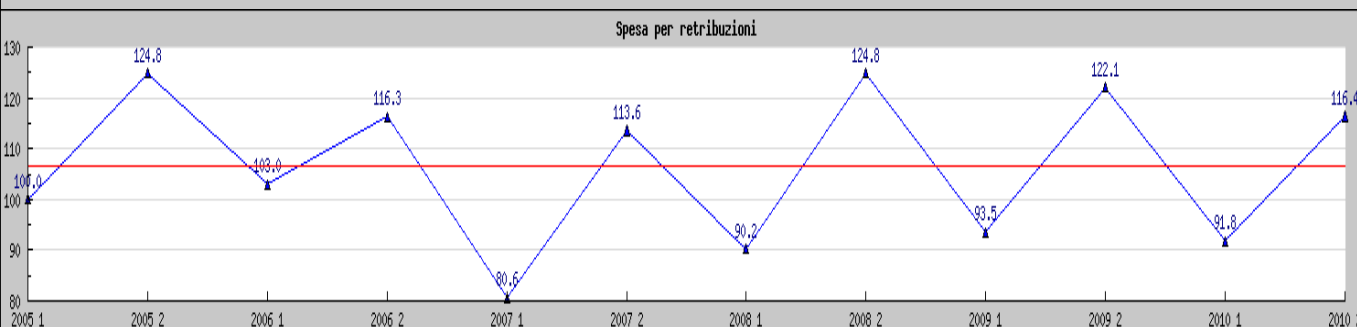
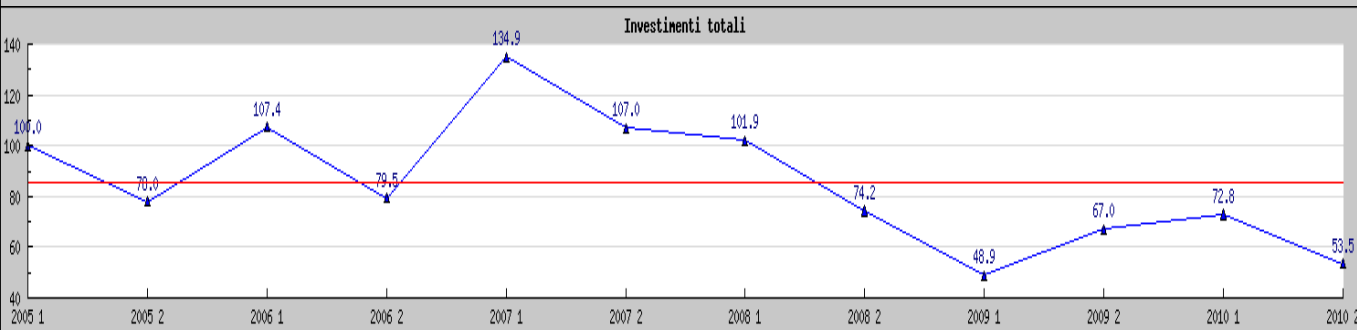
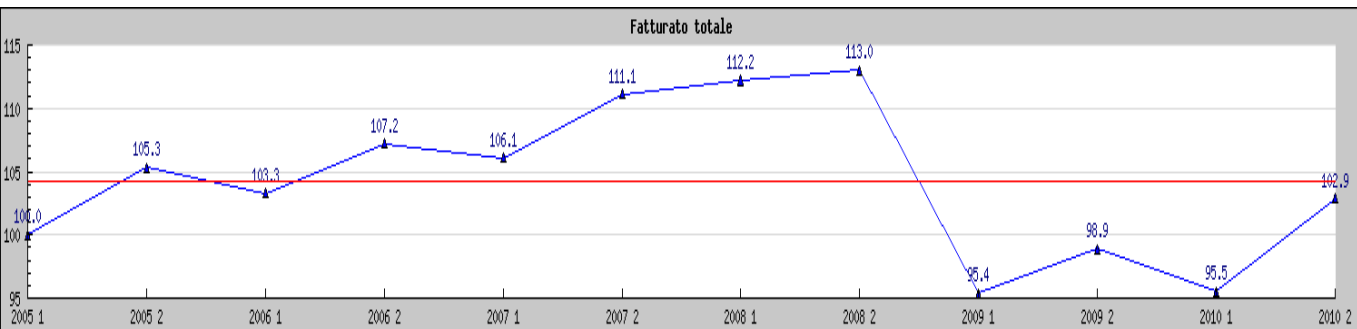
# SERVIZI A FAMIGLIE E PERSONE

Indici dei livelli



# TRASPORTI

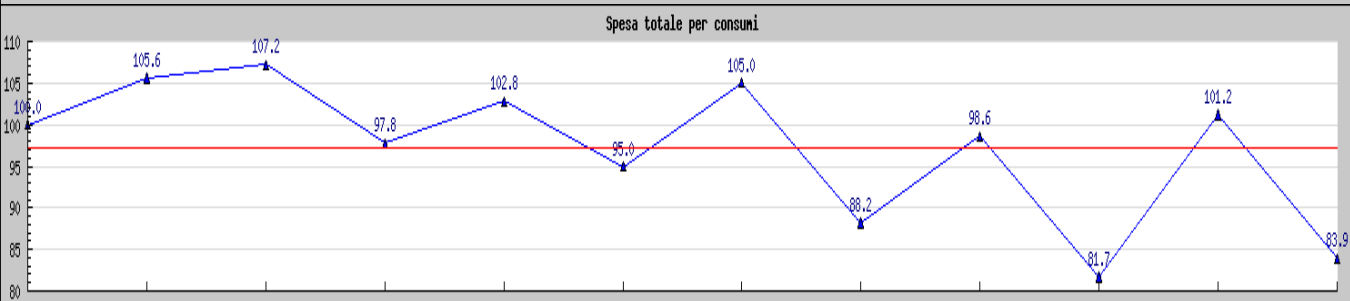
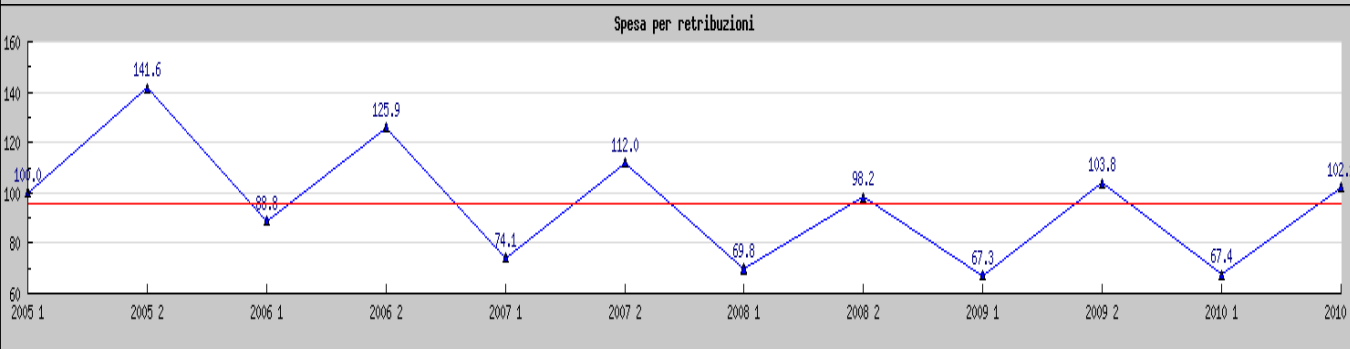
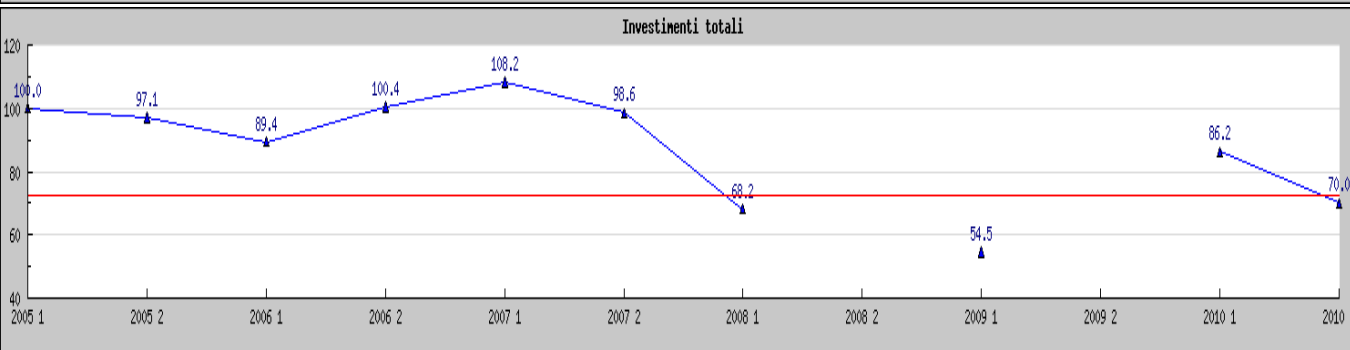
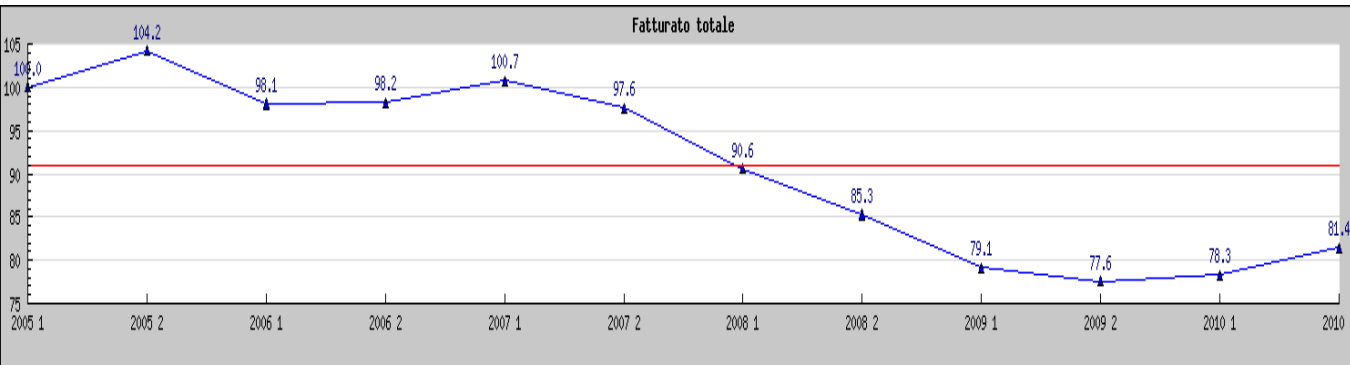
Indici dei livelli



**TRENDER**  
OSSERVATORIO CONGIUNTURALE  
SULLA PICCOLA E MEDIA IMPRESA IN EMILIA ROMAGNA

# RIPARAZIONE VEICOLI

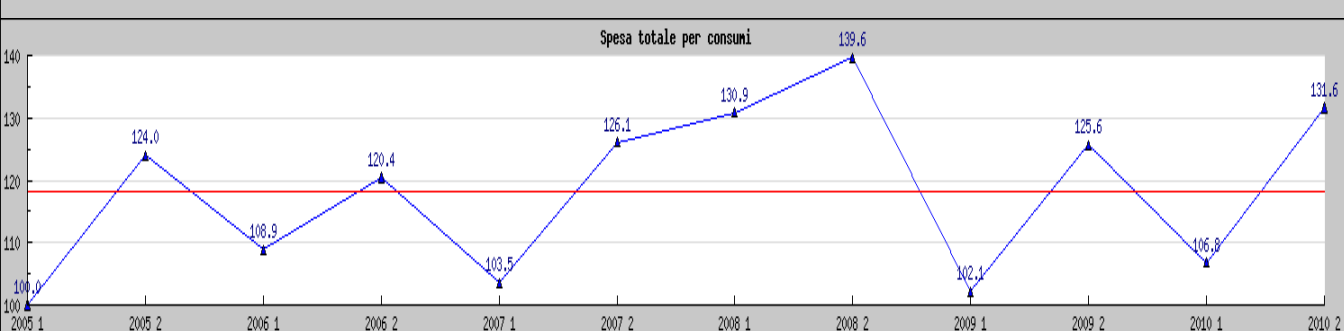
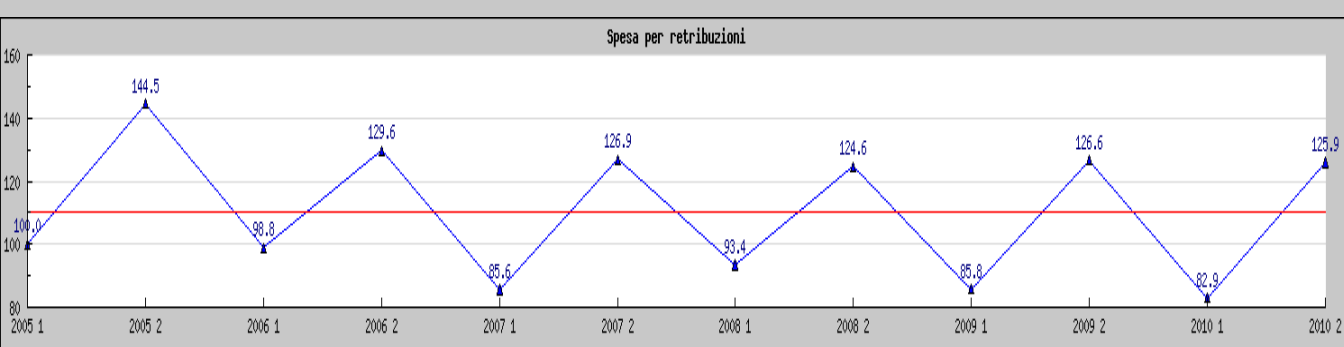
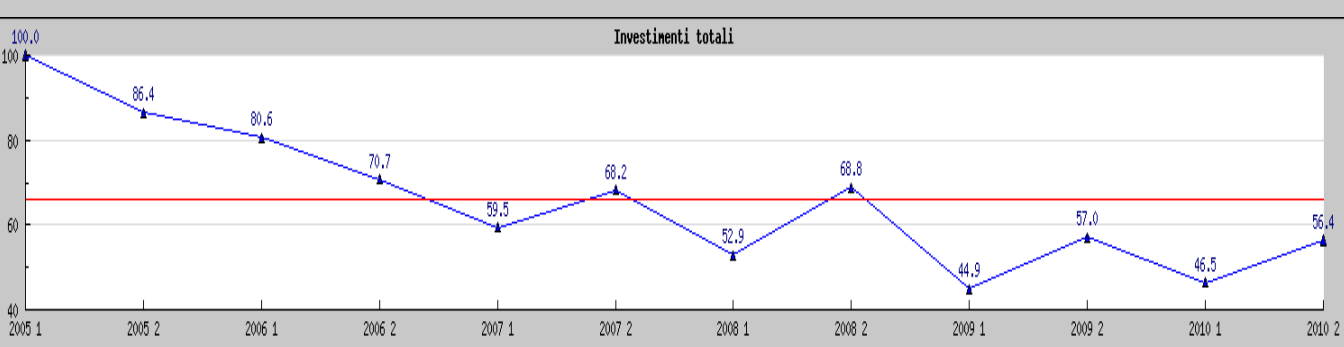
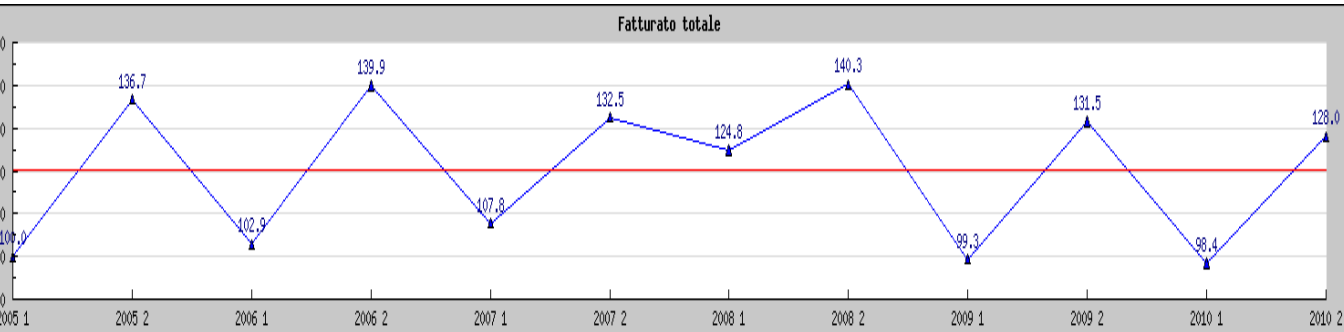
Indici dei livelli



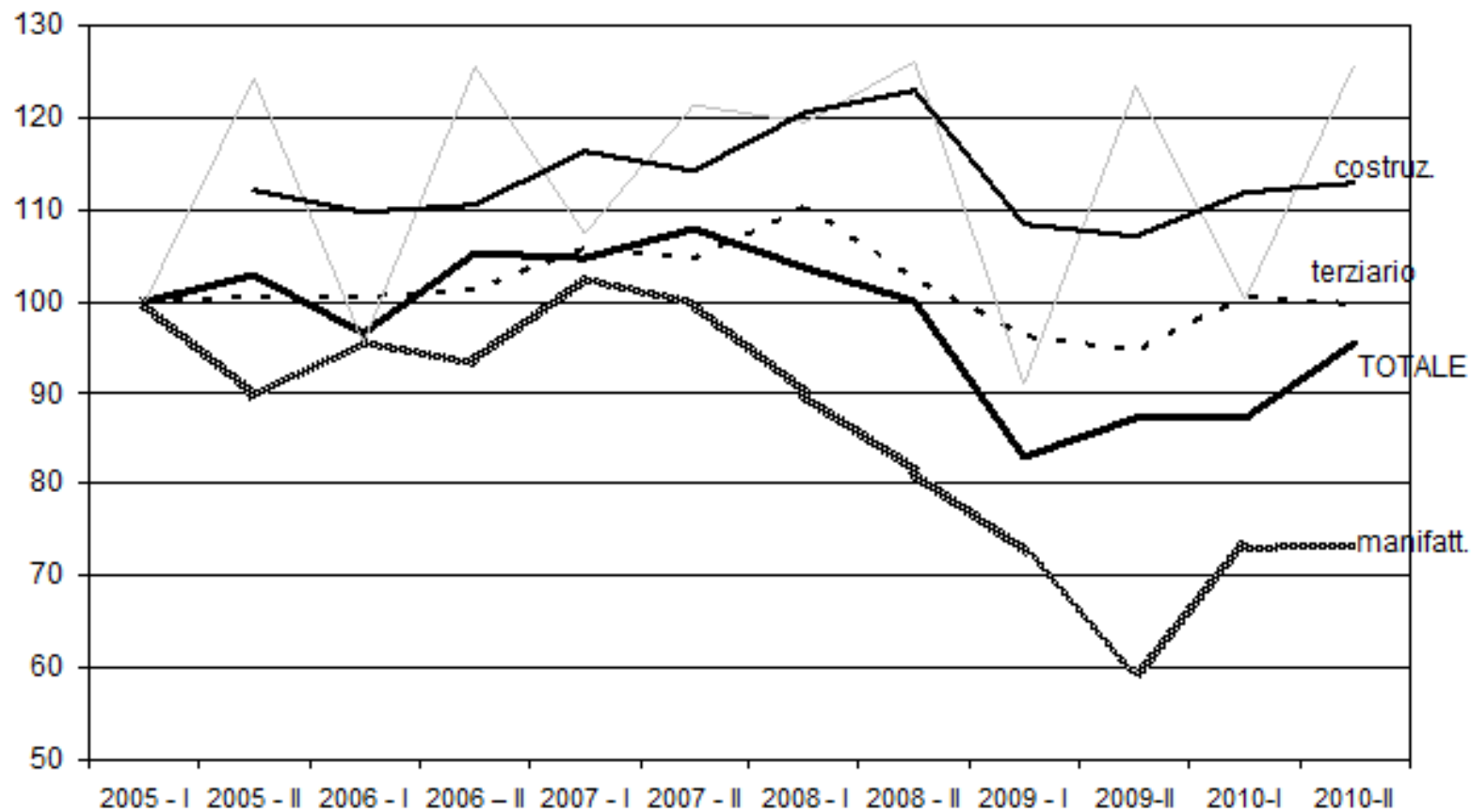
**TRENDER**  
 OSSERVATORIO CONGIUNTURALE  
 SULLA PICCOLA E MEDIA IMPRESA IN EMILIA ROMAGNA

# COSTRUZIONI

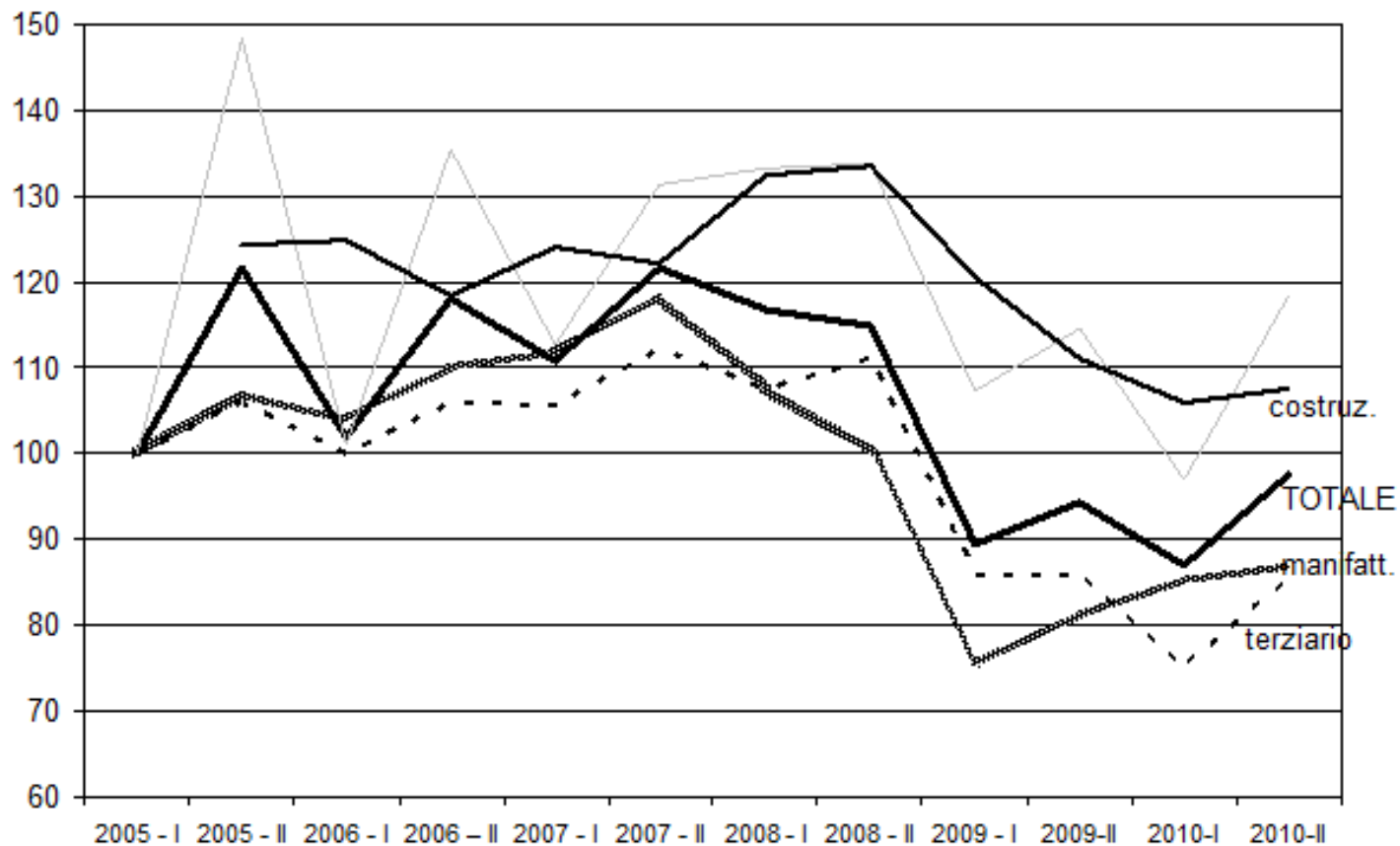
Indici dei livelli



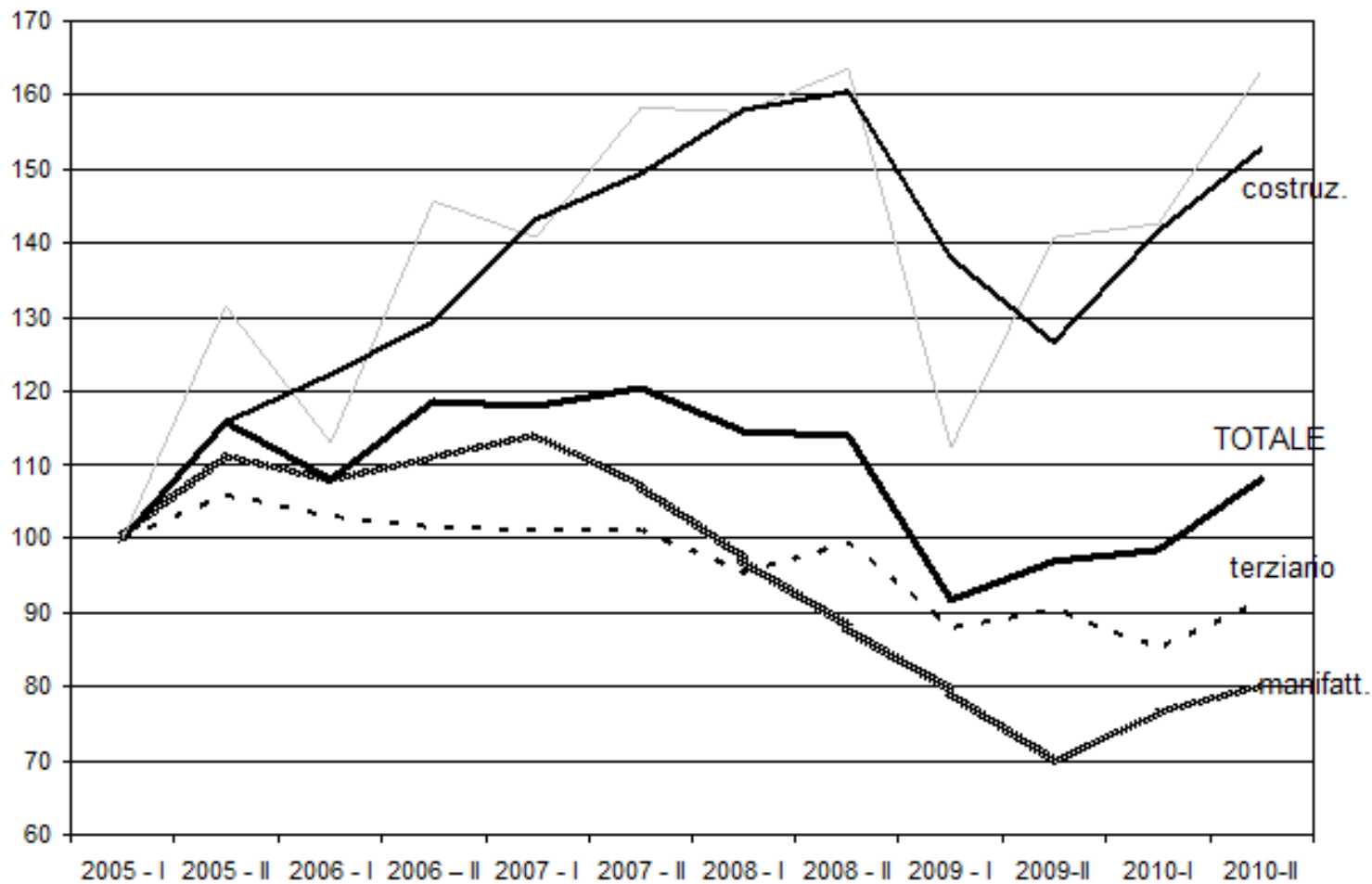
indice del fatturato - provincia di Bologna



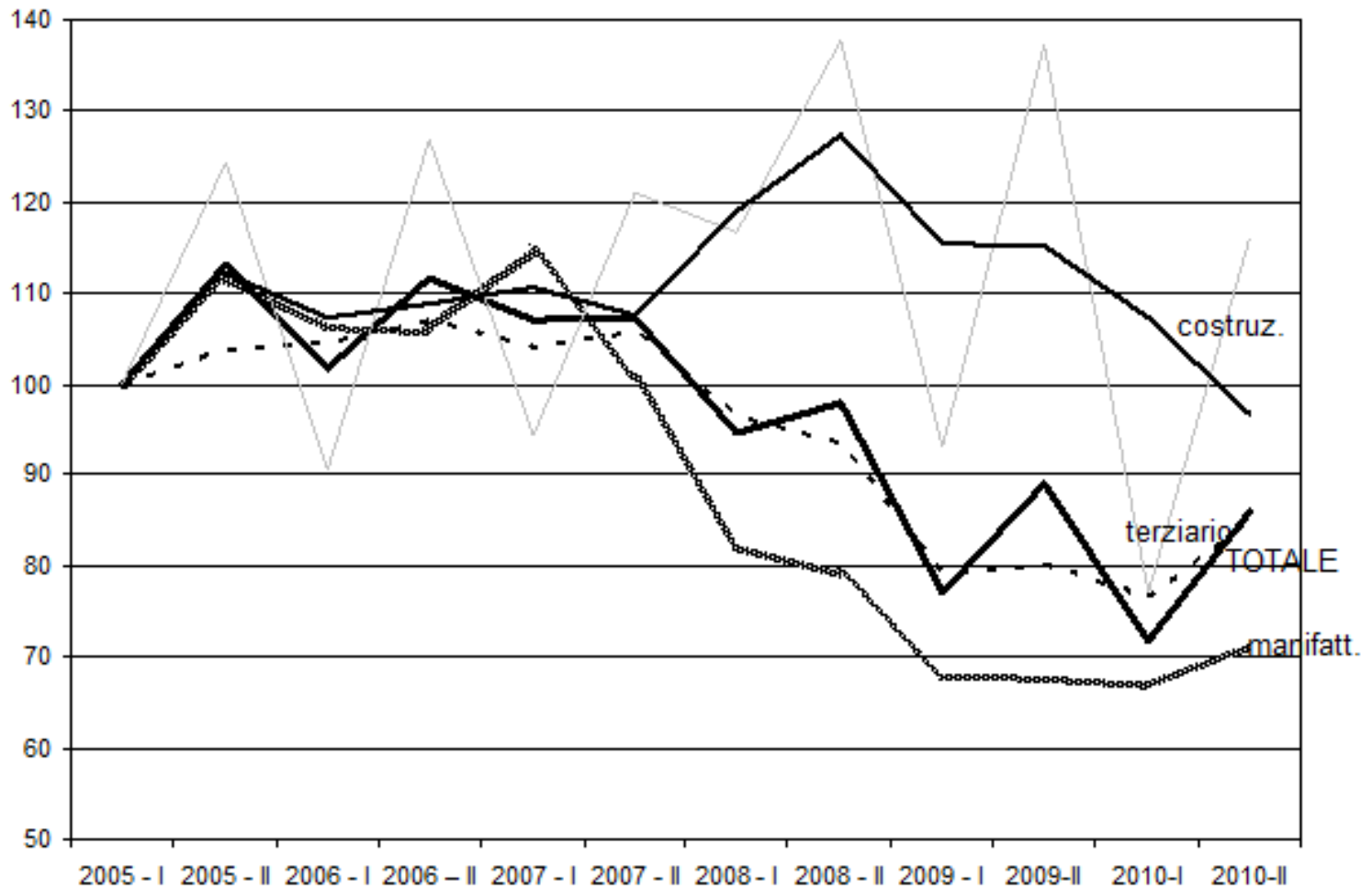
indice del fatturato - provincia di Ferrara



indice del fatturato - provincia di Forlì Cesena

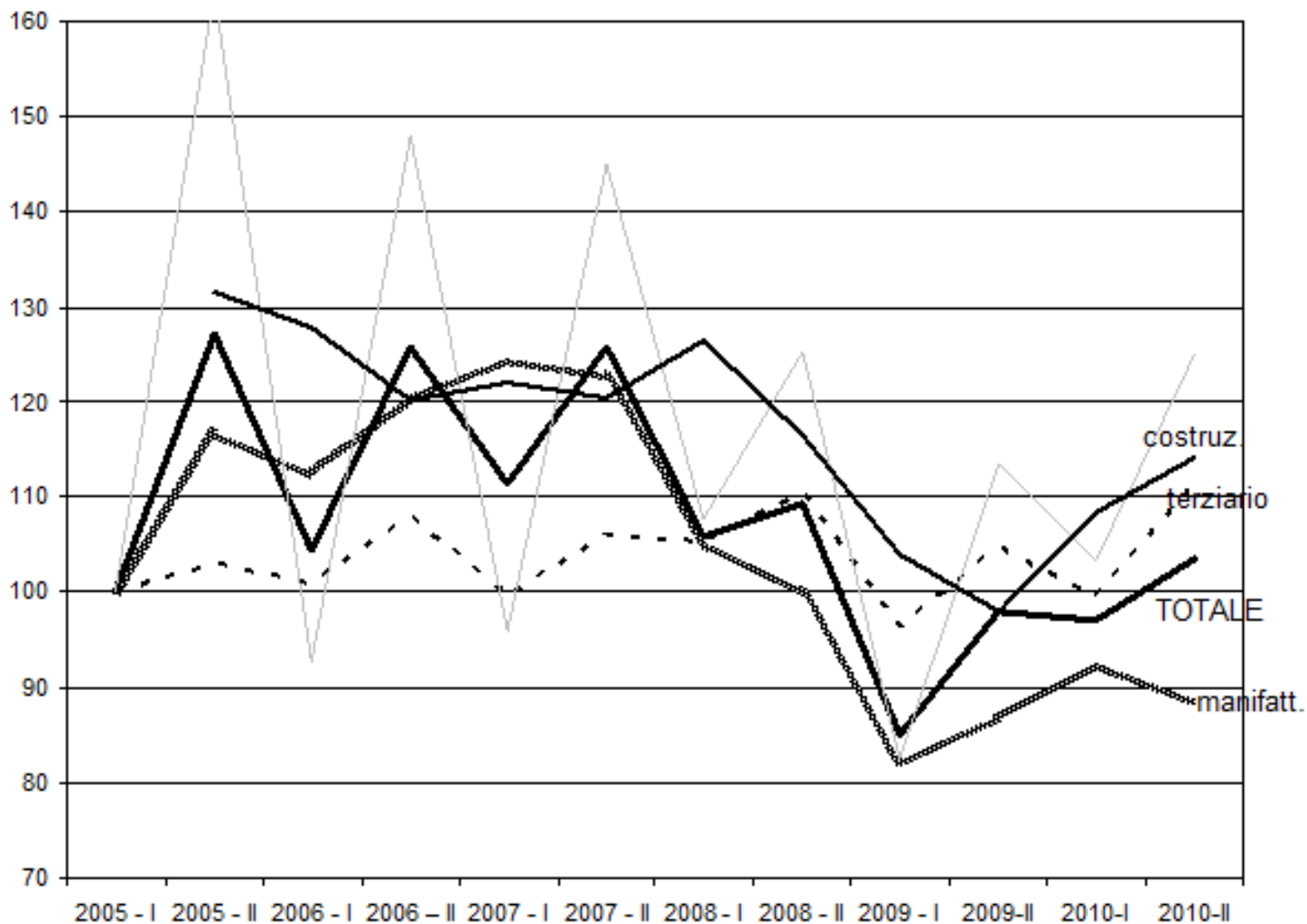


indice del fatturato - provincia di Modena





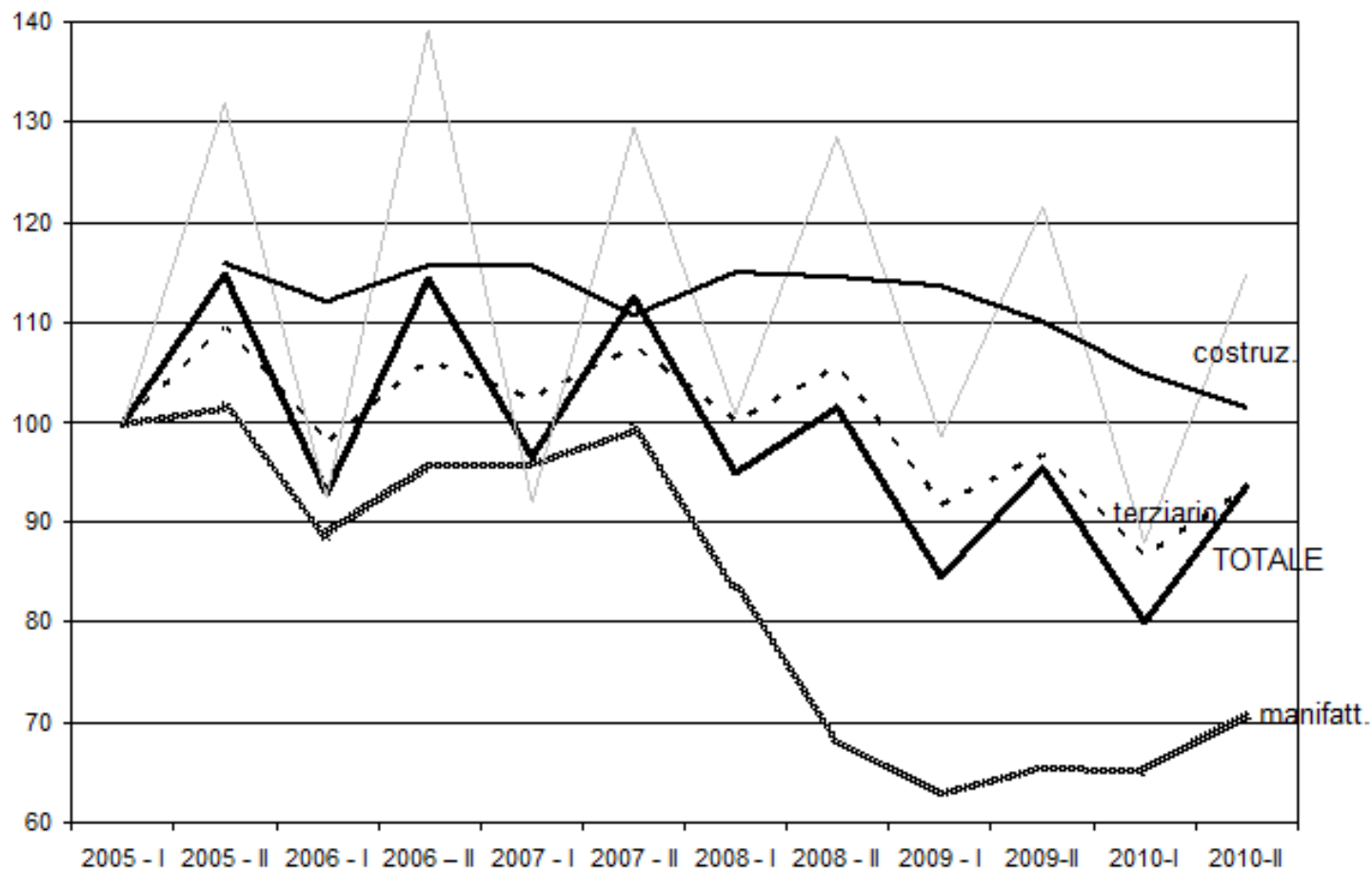
indice del fatturato - provincia di Parma



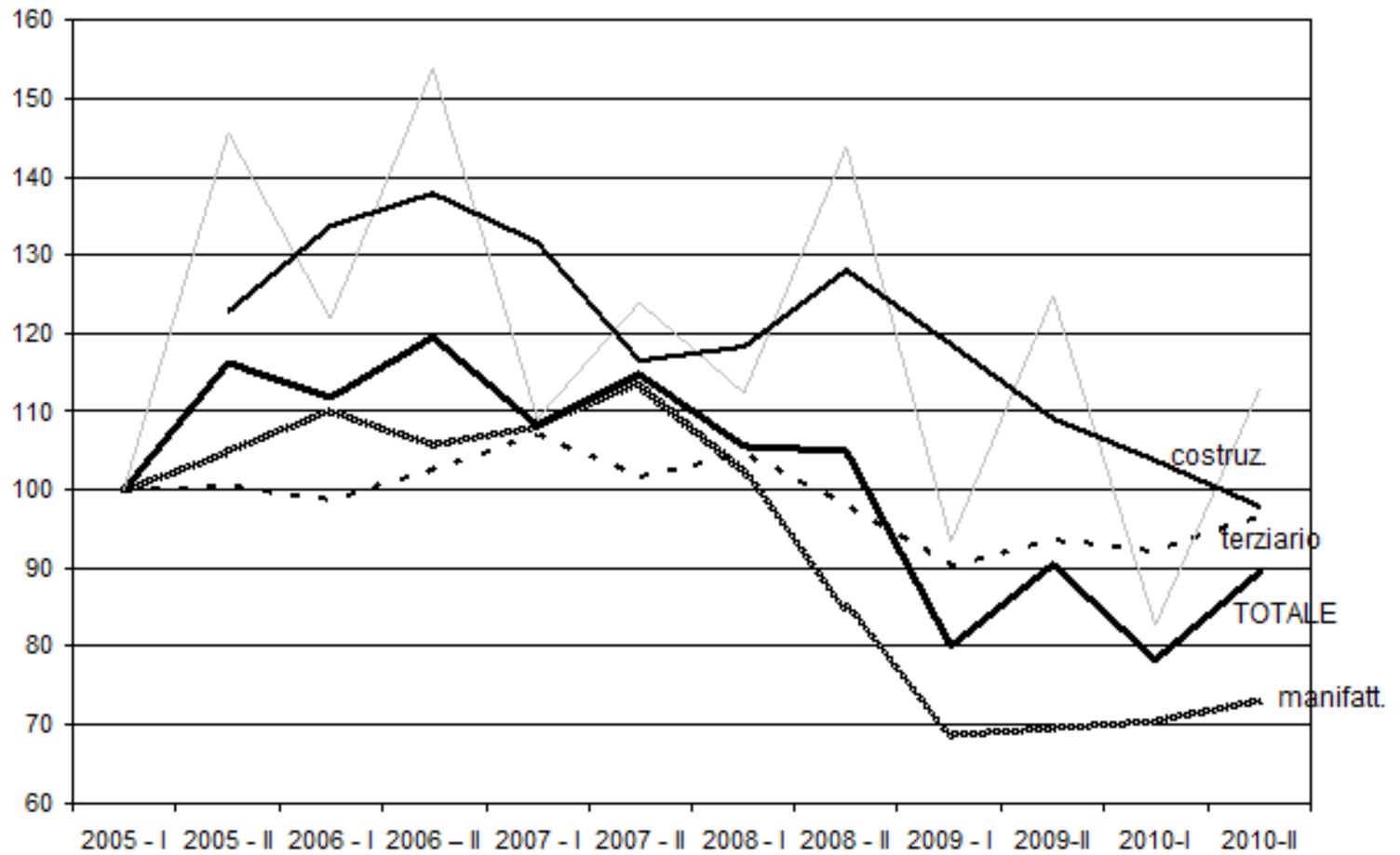
indice del fatturato - provincia di Piacenza



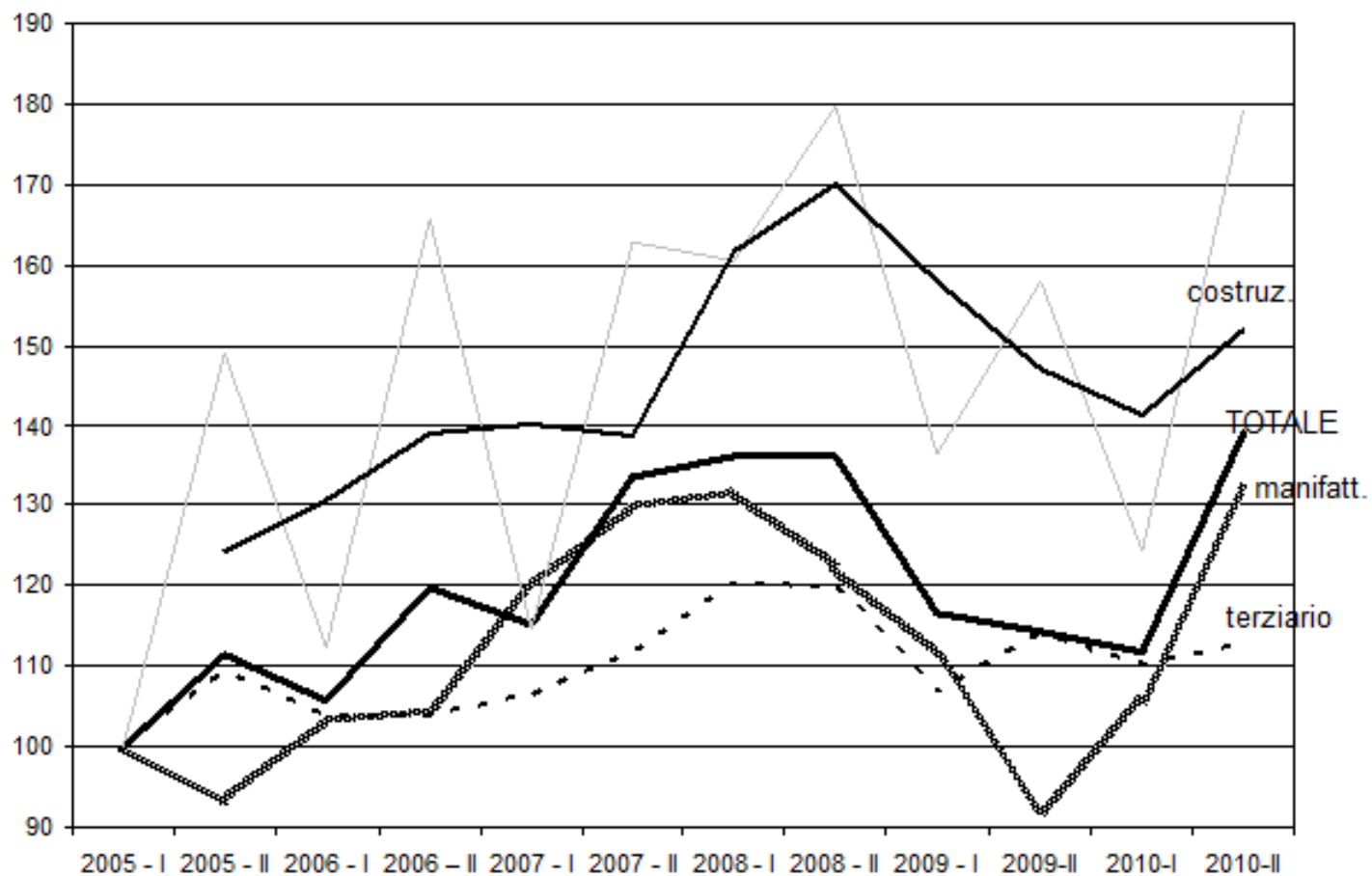
indice del fatturato - provincia di Ravenna



indice del fatturato - provincia di Reggio Emilia



indice del fatturato - provincia di Rimini



# FINE PRESENTAZIONE

